

Acronis

Acronis Backup Service Version 5

Table of contents

1	Administrator's Guide	4
1.1	About this document	4
1.2	What's new in version 5.....	4
1.3	About the backup service	4
1.3.1	Accounts and groups.....	4
1.3.2	Components	5
1.3.3	Supported web browsers	7
1.4	Step-by-step instructions.....	7
1.4.1	Activating the backup service subscription	7
1.4.2	Creating a group	7
1.4.3	Creating an account	8
1.4.4	Accessing the web consoles	9
1.4.5	Creating a report about the service usage	9
1.5	Advanced scenarios	10
1.5.1	Deploying agents on client machines	10
2	User's Guide	12
2.1	About the backup service	12
2.2	What's new in version 5.....	12
2.3	Software requirements.....	14
2.3.1	Supported web browsers	14
2.3.2	Supported operating systems and environments	14
2.3.3	Supported Microsoft SQL Server versions.....	15
2.3.4	Supported Microsoft Exchange Server versions	15
2.4	Activating the account	16
2.5	Accessing the backup service	16
2.6	Installing the software	16
2.6.1	Preparation	16
2.6.2	Proxy server settings	18
2.6.3	Linux packages.....	19
2.6.4	Installing agents.....	21
2.6.5	Updating agents	22
2.6.6	Uninstalling agents	23
2.7	Backup console views	23
2.8	Backup	24
2.8.1	Backup plan cheat sheet.....	26
2.8.2	Selecting data to back up.....	26
2.8.3	Selecting a destination	30
2.8.4	Schedule.....	31
2.8.5	Retention rules	32
2.8.6	Replication	32
2.8.7	Encryption.....	33
2.8.8	Starting a backup manually	34
2.8.9	Backup options	35
2.9	Recovery	50
2.9.1	Recovery cheat sheet.....	50
2.9.2	Creating bootable media	51

2.9.3	Recovering a machine.....	51
2.9.4	Recovering files.....	56
2.9.5	Recovering system state.....	58
2.9.6	Recovering SQL databases.....	58
2.9.7	Recovering Exchange data.....	61
2.9.8	Recovery options.....	62
2.10	Operations with backups.....	68
2.10.1	The Backups tab.....	68
2.10.2	Deleting backups.....	68
2.11	Operations with backup plans.....	69
2.12	Advanced operations with virtual machines.....	70
2.12.1	Running a virtual machine from a backup.....	70
2.12.2	Application-aware backup.....	72
2.12.3	Managing virtualization environments.....	74
2.12.4	Machine migration.....	74
2.13	Troubleshooting.....	75
3	Glossary	76

1 Administrator's Guide

1.1 About this document

This document is intended for organization administrators and end users who want to use Acronis Backup Service.

This document describes how to quickly set up the backup service and perform backup and recovery.

1.2 What's new in version 5

- **Quotas for the numbers of protected machines.** You can set "hard" quotas and overage for the number of workstations, servers, and virtual machines that an account (p. 8) is allowed to back up.

For information about new backup and recovery features, refer to the "What's new in version 5" (p. 12) section of the User's Guide.

1.3 About the backup service

The backup service management is available through a web interface.

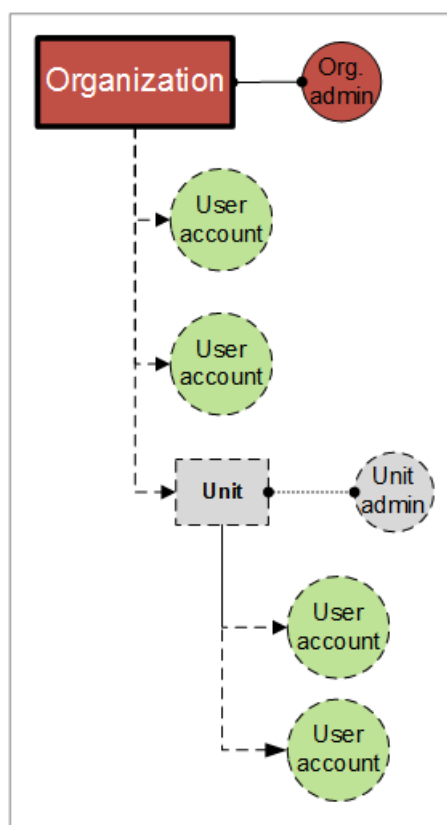
1.3.1 Accounts and groups

There are two account types: **administrator accounts** and **user accounts**. Both the user and the administrators can manage backups of the user's data.

Each account belongs to a group. The **organization** group is automatically created for your organization. Optionally, you can create unit groups, which typically correspond to units or departments of the organization.

An **administrator** can create and manage groups, administrator accounts, and user accounts on or below their level in the hierarchy.

The following diagram illustrates two hierarchy levels—the organization and unit groups. Optional groups and accounts are shown by a dotted line.



The following table summarizes operations that can be performed by the administrators and users.

Operation	Administrators	Users
Create groups	Yes	No
Create accounts	Yes	No
Download and install the backup software	Yes	Yes
Manage backup	Yes	Yes
Manage recovery	Yes	Yes
Create reports about the service usage	Yes	No

1.3.2 Components

This section describes the software components utilized by the backup service.

On the end-user side

At least one of the following components must be installed on the end-user side:

- **Agent for Windows** backs up disks, volumes, and files on a machine running Windows.
- **Agent for VMware** backs up ESX(i) virtual machines without installing agents into the guest systems. The agent is installed on a Windows machine that has network access to vCenter Server and to the storage where the backed-up virtual machines are stored.

- **Agent for Hyper-V** backs up Hyper-V virtual machines without installing agents into the guest systems. The agent is installed on a Hyper-V host.
- **Agent for Virtuozzo** backs up Virtuozzo virtual machines and containers without installing agents into the guest systems. The agent is installed on a Virtuozzo host.
- **Agent for Exchange** backs up Microsoft Exchange Server databases.
- **Agent for SQL** backs up Microsoft SQL Server databases.
- **Agent for Linux** backs up disks, volumes, and files on a machine running Linux.
- **Agent for Mac** backs up disks, volumes, and files on a machine running OS X.

The agents can be installed by users or by administrators.

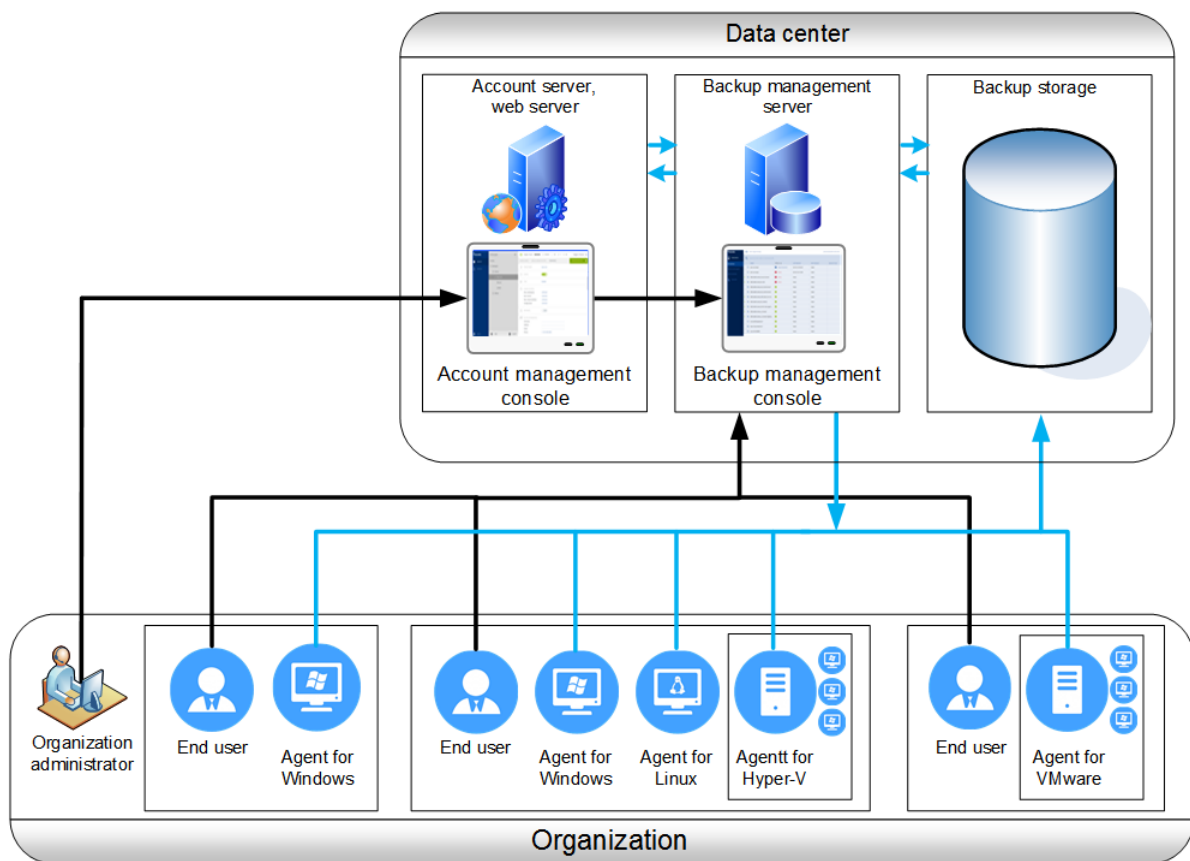
On the data-center side

The servers are located in Acronis data centers.

- **Account server** stores the user account hierarchy and enables administering the backup service from the **account management console**. Only administrators can access this console.
- **Backup management server** manages the agents. It enables users and administrators to set up and monitor backups from the **backup management console**.

The backup storages are located in Acronis data centers. End users have the option to store backups either in a data center or within their local networks.

The following diagram illustrates the default backup service architecture. Blue arrows (→) show the software component interactions. Black arrows (→) show how administrators and end users access the backup service.



1.3.3 Supported web browsers

The backup service web interface supports the following web browsers:

- Google Chrome 29 or later
- Mozilla Firefox 23 or later
- Opera 16 or later
- Windows Internet Explorer 10 or later
- Safari 5.1.7 or later running in the OS X and iOS operating systems

In other web browsers (including Safari browsers running in other operating systems), the user interface might be displayed incorrectly, or some functions may be unavailable.

1.4 Step-by-step instructions

The following steps will guide you through the installation and basic use of the backup service. They describe how to:

- Activate the backup service subscription
- Create a group
- Create an account
- Access the backup management console
- Create a report about the service usage

For information about how to back up and recover data, refer to the User's Guide (p. 12).

1.4.1 Activating the backup service subscription

1. Go to <http://www.acronis.com/en-us/my/backup-service/>.
2. Log in to your Acronis account. If you do not have an Acronis account, create one.
3. Enter the backup service registration codes.
4. Click **Register**.
5. To access the account management console, click **Manage your backups**.
At a later time, you can access the management console at <https://backup.acronis.com/>.

1.4.2 Creating a group

Skip this step if you do not want to organize accounts into groups.

You may want to create a new **Unit** group within a EUC group when expanding the backup service to a new organizational unit.

To create a group

1. Log in to the backup management console.
2. Click **Manage accounts**.
3. Select a group in which you want to create the new group.
4. On the bottom of the **Groups** pane, click "+".
5. In **Name**, specify a name for the new group.

6. [Optional] In **Identifier**, type a string that will act as the identifier for the group. This identifier will appear in monthly reports, together with the group's usage data. You can use this identifier to refer to this group in other software, such as in your billing or monitoring systems.
The identifier can consist of up to 256 Unicode characters (for example, numbers and Latin letters). It does not need to be unique across groups.
7. In **Language**, select the default language of notifications, reports, and backup software that will be used within this group.
8. [Optional] In **Contact information**, specify the contact information for the group.
9. Click **Create**.

The newly created group appears in the **Groups** tree.

If you want to specify the billing information for a group, select the group in the **Groups** list, click **Properties**, and then complete the billing information section.

1.4.3 Creating an account

At least one account (either an administrator or a user) must exist within a unit. If an EUC does not have units, at least one account must exist within the EUC.

To create an account

1. Log in to the backup management console.
2. Click **Manage accounts**.
3. Select a group in which you want to create the account.
4. Click the **Accounts** tab, and then click "+".
5. Specify the following contact information for the account.
 - **Login**

Important Each account must have a unique login. You can create multiple logins using the same email address.

 - **Email address**
 - [Optional] **First name**
 - [Optional] **Last name**
6. If you want this account to be an administrator account, enable the **Administrator privileges** switch.
7. [Optional] Specify the storage quota and the maximum number of machines the user is allowed to back up.
 - **Physical workstations**
 - **Physical servers**
 - **Virtual machines**
 - **Storage quota**

These quotas are "soft". If any of these values are exceeded, a notification will be sent to the email address specified in step 5. Restrictions on using the backup service are not applied.
8. [Optional] Specify the quota overages. An overage allows the user to exceed the quota by the specified value. When the overage is exceeded, backups fail.

Important If you set both a quota and its overage to zero, the corresponding functionality will be hidden from the user.

9. [Optional] Change the **Backup notifications** level. If you disable backup notifications, the notifications about backup failures, warnings, and successful backups will not be sent to the specified email address.
10. [Optional] Disable **Business notifications**. If you do this, notifications about exceeded quotas will not be sent to the specified email address.
11. Click **Add**.

As a result:

- A new account appears in the **Accounts** tab.
- An email message containing the activation link is sent to the email address you specified.

1.4.4 Accessing the web consoles

To log in to the backup service

1. Go to the backup service login page. The login page address was included in the activation email message.
2. Type the login and password of the account.
3. Click **Log in**.

Administrators log in directly to the backup console. To access the account management console, they must click **Manage accounts**.

For information about how to back up and recover data, refer to the User's Guide (p. 12).

1.4.5 Creating a report about the service usage

Usage reports provide historical data about using the backup service.

Only administrators can create these reports. The report data differs, depending on who created the report.

- Reports created by organization administrators contain statistics for each of the units.
- Reports created by unit administrators contain statistics for each of end users in the unit.

Reporting parameters

The report includes the following data about a unit and its accounts:

- Size of backups by group, by account, by machine type.
- Amount of protected machines by group, by account, by machine type.
- Price value by group, by account, by machine type.
- The total size of backups.
- The total amount of protected machines.
- Total price value.

Enabling or disabling scheduled usage reports

Scheduled report covers system usage data for the last full calendar month. The reports will be generated and sent on the second day of every month to all administrators of your group.

1. In the account management console, click **Reports**.
2. Select the **Scheduled** tab.
3. In **Status**, enable or disable the scheduled usage reports by clicking the on/off switch.

4. [Optional] To generate a report immediately, click **Send report now**.

Enabling or disabling ad-hoc usage reports

Ad-hoc report covers system usage data for the specified period with one-day interval. This type of report can be generated on demand and cannot be scheduled. The report will be sent to the email address of your administrator account.

1. In the account management console, click **Reports**.
2. Select the **Ad-hoc** tab.
3. In **Reporting period**, select start and end dates of reporting period.
4. To generate a report immediately, click **Send report now**.

1.5 Advanced scenarios

1.5.1 Deploying agents on client machines

You can centrally install (or deploy) Agent for Windows onto machines that are members of an Active Directory domain, by using Group Policy.

In this section, you will find out how to set up a Group Policy object to deploy agents onto machines in an entire domain or in its organizational unit.

Every time a machine logs on to the domain, the resulting Group Policy object will ensure that the agent is installed on the machine and the machine is registered in the backup service.

Prerequisites

Before proceeding with agent deployment, ensure that:

- You have an Active Directory domain with a domain controller running Microsoft Windows Server 2003 or later.
- You are a member of the **Domain Admins** group in the domain.
- You have downloaded the **All agents for installation in Windows** setup program. The download link is available on the **Add machine** page in the backup console.

Step 1: Creating the .mst transform and extracting the installation package

1. Log on as an administrator on any machine in the domain.
2. Create a shared folder that will contain the installation packages. Ensure that domain users can access the shared folder—for example, by leaving the default sharing settings for **Everyone**.
3. Copy the setup program to the folder you created.
4. Start the setup program.
5. Click **Create .mst and .msi files for unattended installation**.
6. Specify the credentials of the account to which the machines should be assigned.
7. Review or modify the installation settings that will be added to the .mst file.
8. Click **Generate**.

As a result, the .mst transform is generated and the .msi and .cab installation packages are extracted to the folder you created. You can now move or delete the setup program .exe file.

Step 2: Setting up the Group Policy objects

1. Log on to the domain controller as a domain administrator; if the domain has more than one domain controller, log on to any of them as a domain administrator.
2. If you are planning to deploy the agent in an organizational unit, ensure that the organizational unit exists in the domain. Otherwise, skip this step.
3. In the **Start** menu, point to **Administrative Tools**, and then click **Active Directory Users and Computers** (in Windows Server 2003) or **Group Policy Management** (in Windows Server 2008 and Windows Server 2012).
4. In Windows Server 2003:
 - Right-click the name of the domain or organizational unit, and then click **Properties**. In the dialog box, click the **Group Policy** tab, and then click **New**.In Windows Server 2008 and Windows Server 2012:
 - Right-click the name of the domain or organizational unit, and then click **Create a GPO in this domain, and Link it here**.
5. Name the new Group Policy object **Agent for Windows**.
6. Open the **Agent for Windows** Group Policy object for editing, as follows:
 - In Windows Server 2003, click the Group Policy object, and then click **Edit**.
 - In Windows Server 2008 and Windows Server 2012, under **Group Policy Objects**, right-click the Group Policy object, and then click **Edit**.
7. In the Group Policy object editor snap-in, expand **Computer Configuration**.
8. In Windows Server 2003 and Windows Server 2008:
 - Expand **Software Settings**.In Windows Server 2012:
 - Expand **Policies > Software Settings**.
9. Right-click **Software installation**, then point to **New**, and then click **Package**.
10. Select the agent's .msi installation package in the shared folder that you previously created, and then click **Open**.
11. In the **Deploy Software** dialog box, click **Advanced**, and then click **OK**.
12. On the **Modifications** tab, click **Add**, and then select the .mst transform that you previously created.
13. Click **OK** to close the **Deploy Software** dialog box.

2 User's Guide

2.1 About the backup service

This service enables backup and recovery of physical and virtual machines, files, and databases to local or cloud storage.

This service is available through a web interface.

2.2 What's new in version 5

Virtualization

The availability of the features listed in this section depends on the settings made by your backup service administrator.

- **Recovery to a new VM.** Define a new name and exact location for machines that are recovered as VMs (p. 54) (Hyper-V and ESXi).
- **VM Flashback (incremental restore).** The fastest possible VM recovery technology. Only the changes between the current VM state and its state within the backup are recovered. Both Hyper-V and ESXi platforms are supported.
- **New platform support: Virtuozzo.** Agent-less backup and recovery (including file recovery) of Virtuozzo virtual machines and containers.
- **Run a VM from a backup (instant recovery) and move it to production without downtime.** The ability to run an ESXi or Hyper-V virtual machine (p. 70) from a locally stored backup of a virtual or physical machine, for validation or disaster-recovery purposes. An ESXi machine running from a backup can be converted to a regular virtual machine, without downtime.
- **Application items recovery from a VM backup.** Application-aware agent-less backup (p. 72) of ESXi virtual machines running Microsoft SQL Server and Microsoft Exchange enables browsing and recovery of databases without recovering the entire machine.
- **Application-aware backup of VMs with Microsoft Active Directory.** Application-aware agent-less backup (p. 72) of ESXi virtual machines running Microsoft Active Directory prevents the possibility of a USN rollback after a recovery of a domain controller.
- **Enhanced hypervisor management.** The ability to view (p. 74) vSphere and Hyper-V environments in the native hypervisor-specific presentation.
- **Change vCenter/ESXi password without reinstallation.** The ability to change (p. 74) the vCenter or ESXi host connection password in the backup console.
- **Flexible backup configuration.** More backup options:
 - CBT. Changed Block Tracking (CBT) for both Hyper-V and ESXi virtual machines.
 - Choose between crash-consistent and application-consistent snapshots. New **Volume Shadow Copy Service (VSS) for virtual machines** backup option to enable or disable quiescing by using hypervisor tools. Supports both Hyper-V and ESXi virtual machines.
 - Intelligent snapshot failure handling. Re-attempt, if an error occurs when creating a virtual machine snapshot. Supports both Hyper-V and ESXi virtual machines.
- **More recovery options:**
 - VM power management.

Monitoring

- **Centralized view for activities.** The new **Activities** tab enables viewing and auditing activities from all machines in a single place. Each account has a view scoped to their area of control.
- **Improved problem detection via alerts.** The new **Alerts** tab was added. Alerts are raised not only on errors or failures, but also on frozen, missed, or corrupted backups, exceeded quotas. Once a problem is resolved, the alert is automatically dismissed.

Backup

- **Self-service backup monitor.** Backup monitor (in a Windows taskbar or an OS X menu bar) enables the end users to control the backup process:
 - Protect the machine with a single click immediately after the agent installation.
 - View the backup progress.
 - Prevent the backups from running.
- **Backup replication.** The ability to replicate backups (p. 32) to a local folder or to a network share. Separate retention rules can be applied to the second destination.
- **Advanced backup schemes.** The ability to choose a backup scheme (p. 31) (Always full; Weekly full, Daily incremental; Custom) when configuring a disk-level backup to a local or a network folder.
- **Advanced scheduling options.** The ability to create a backup plan without a predefined schedule and to disable a schedule for an existing backup plan. The plans with the disabled schedule can be run manually.
- **Flexible backup configuration.** The new backup options give you more control over the backup process:
 - Backup consolidation
 - Backup splitting
 - Compression level
 - Fast incremental/differential backup
 - File-level security
 - Task failure handling

Recovery

- **Simplified P2V and V2P migration.** The ability to recover backups of physical machines as virtual machines and vice versa (p. 74) by using the web interface.
- **Enhanced backups management.** The new **Backups** tab enables browsing and management (p. 68) of locally stored backups, including backups of machines which are no longer present in the backup console. Each account has a view scoped to their area of control.
- **More recovery options:**
 - Restart the machine automatically after a recovery is finished.

Other

- Backup agents (p. 18) and bootable media now support HTTP proxy servers.
- It is now possible to delete a single backup (p. 68).
- The backup agent setup language can now be selected in the setup program.
- Usability fixes and improvements. The user interface was improved to simplify the backup and recovery configuration.

2.3 Software requirements

2.3.1 Supported web browsers

The backup service web interface supports the following web browsers:

- Google Chrome 29 or later
- Mozilla Firefox 23 or later
- Opera 16 or later
- Windows Internet Explorer 10 or later
- Safari 5.1.7 or later running in the OS X and iOS operating systems

In other web browsers (including Safari browsers running in other operating systems), the user interface might be displayed incorrectly, or some functions may be unavailable.

2.3.2 Supported operating systems and environments

Agent for Windows

Windows XP Professional SP2+ (x86, x64)

Windows Server 2003/2003 R2 – Standard and Enterprise editions (x86, x64)

Windows Small Business Server 2003/2003 R2

Windows Vista – all editions

Windows Server 2008 – Standard, Enterprise, Datacenter, and Web editions (x86, x64)

Windows Small Business Server 2008

Windows 7 – all editions

Windows Server 2008 R2 – Standard, Enterprise, Datacenter, Foundation, and Web editions

Windows MultiPoint Server 2010/2011/2012

Windows Small Business Server 2011 – all editions

Windows 8/8.1 – all editions except for the Windows RT editions (x86, x64)

Windows Server 2012/2012 R2 – all editions

Windows Storage Server 2003/2008/2008 R2/2012/2012 R2

Windows 10 - Home, Pro, Education, Enterprise editions

Windows Server 2016 – Technical Preview 4

Agent for Linux

Linux with kernel from 2.4.20 to 4.4 and glibc 2.3.2 or later

Various x86 and x86_64 Linux distributions, including:

Red Hat Enterprise Linux 4.x, 5.x, 6.x, 7.0, 7.1, and 7.2

Ubuntu 9.10, 10.04, 10.10, 11.04, 11.10, 12.04, 12.10, 13.04, 13.10, 14.04, 14.10, 15.04, and 15.10

Fedora 11, 12, 13, 14, 15, 16, 17, 18, 19, 20, 21, 22, and 23

SUSE Linux Enterprise Server 10 and 11

SUSE Linux Enterprise Server 12 – supported on file systems, except for Btrfs

Debian 4, 5, 6, 7.0, 7.2, 7.4, 7.5, 7.6, 7.7, 8.0, 8.1, and 8.2

CentOS 5.x, 6.x, and 7.0

Oracle Linux 5.x, 6.x, 7.0, 7.1, and 7.2 – both Unbreakable Enterprise Kernel and Red Hat Compatible Kernel

CloudLinux 6.x

ClearOS 5.x, 6.x, 7, and 7.1

Before installing the product on a system that does not use RPM Package Manager, such as an Ubuntu system, you need to install this manager manually; for example, by running the following command (as the root user): **apt-get install rpm**

Agent for Mac

OS X Mountain Lion 10.8

OS X Mavericks 10.9

OS X Yosemite 10.10

OS X El Capitan 10.11

Agent for VMware

This agent is delivered as a Windows application for running in any operating system listed above for Agent for Windows.

VMware ESX(i) 4.0, 4.1, 5.0, 5.1, 5.5, and 6.0

Agent for Hyper-V

Windows Server 2008 (x64) with Hyper-V

Windows Server 2008 R2 with Hyper-V

Microsoft Hyper-V Server 2008/2008 R2

Windows Server 2012/2012 R2 with Hyper-V

Microsoft Hyper-V Server 2012/2012 R2

Windows 8, 8.1 (x64) with Hyper-V

Windows 10 – Pro, Education, and Enterprise editions with Hyper-V

Windows Server 2016 with Hyper-V – Technical Preview 4

Agent for Virtuozzo

Virtuozzo 6.0.10

2.3.3 Supported Microsoft SQL Server versions

Agent for SQL supports the following versions of Microsoft SQL Server:

- Microsoft SQL Server 2005
- Microsoft SQL Server 2008
- Microsoft SQL Server 2008 R2
- Microsoft SQL Server 2012
- Microsoft SQL Server 2014

2.3.4 Supported Microsoft Exchange Server versions

Agent for Exchange supports the following versions of Microsoft Exchange Server:

- **Microsoft Exchange Server 2016** – all editions
- **Microsoft Exchange Server 2013** – all editions, Cumulative Update 1 (CU1) and later.
- **Microsoft Exchange Server 2007/2010** – all editions, all service packs.

- **Microsoft Exchange Server 2003** – all editions, SP2 or later.
Hotfix <http://support.microsoft.com/kb/908072> must be installed.

2.4 Activating the account

When an administrator creates an account for you, an email message is sent to your email address. The message contains the following information:

- **An account activation link.** Click the link and set the password for the account. Remember your login that is shown on the account activation page.
- **A link to the backup console login page.** Use this link to access the console in future. The login and password are the same as in the previous step.

2.5 Accessing the backup service

You can log in to the backup service if you activated your account.

To log in to the backup service

1. Go to the backup service login page. The login page address was included in the activation email message.
2. Type the login and password of the account.
3. Click **Log in**.

2.6 Installing the software

2.6.1 Preparation

Step 1

Choose the agent, depending on what you are going to back up. The following table summarizes the information, to help you decide.

Note that Agent for Windows is installed along with Agent for Exchange and Agent for SQL. If you install, for example, Agent for SQL, you also will be able to back up the entire machine where the agent is installed.

What are you going to back up?	Which agent do I need?	Where to install it?
Physical machines running Windows	Agent for Windows	On the machine that will be backed up.
Physical machines running Linux	Agent for Linux	On the machine that will be backed up.
Physical machines running OS X	Agent for Mac	On the machine that will be backed up.
VMware ESXi virtual machines	Agent for VMware	On a Windows machine that has network access to vCenter Server and to the virtual machine storage.*
Hyper-V virtual machines	Agent for Hyper-V	On the Hyper-V host.
Virtuozzo virtual machines and containers	Agent for Virtuozzo	On the Virtuozzo host.

SQL databases	Agent for SQL	On the machine running Microsoft SQL Server.
Exchange databases	Agent for Exchange	On the machine running Microsoft Exchange Server.
Virtual machines hosted on Windows Azure	The same as for physical machines**	On the machine that will be backed up.

*If your ESXi uses a SAN attached storage, install the agent on a machine connected to the same SAN. The agent will back up the virtual machines directly from the storage rather than via the ESXi host and LAN.

**A virtual machine is considered virtual if it is backed up by an external agent. If an agent is installed in the guest system, the machine appears as a physical machine.

Step 2

Review the system requirements for the agents.

Agent	Disk space occupied by the agent(s)
Agent for Windows	550 MB
Agent for Linux	500 MB
Agent for Mac	450 MB
Agent for VMware	700 MB (150 MB + 550 MB Agent for Windows)
Agent for Hyper-V	600 MB (50 MB + 550 MB Agent for Windows)
Agent for Virtuozzo	500 MB
Agent for Exchange	750 MB (200 MB + 550 MB Agent for Windows)
Agent for SQL	600 MB (50 MB + 550 MB Agent for Windows)

The typical memory consumption is 300 MB above the operating system and running applications. The peak consumption may reach 2 GB, depending on the amount and type of data being processed by the agents.

Step 3

Download the setup program. To find the download links, click **All machines > Add**.

The **Add machine** page provides web installers for each agent that is installed in Windows. A web installer is a small executable file that downloads the main setup program from the Internet and saves it as a temporary file. This file is deleted immediately after the installation.

If you want to store the setup programs locally, download a package containing all agents for installation in Windows by using the link at the bottom of the **Add machine** page. Both 32-bit and 64-bit packages are available. These packages also enable unattended installation, for example, via Group Policy. This advanced scenario is described in the Administrator's Guide (p. 10).

Installation in Linux and OS X is performed from ordinary setup programs.

All setup programs require an Internet connection to register the machine in the backup service. If there is no Internet connection, the installation will fail.

Step 4

Before the installation, ensure that your firewalls and other components of your network security system (such as a proxy sever) allow both inbound and outbound connections through the following TCP ports:

- **443** and **8443** These ports are used for accessing the backup console, registering the agents, downloading the certificates, user authorization, and downloading files from the cloud storage.
- **7770...7800** The agents use these ports to communicate with the backup management server.
- **44445** The agents use this port for data transfer during backup and recovery.

If a proxy server is enabled in your network, refer to the "Proxy server settings" (p. 18) section to understand whether you need to configure these settings on each machine that runs a backup agent.

2.6.2 Proxy server settings

The backup agents can transfer data through an HTTP proxy server.

The agent installation requires an Internet connection. If a proxy server is configured in Windows (**Control panel > Internet Options > Connections**), the setup program reads the proxy server settings from the registry and uses them automatically. In Linux and OS X, you must specify the proxy settings before the installation.

Use the procedures below to specify the proxy settings before the agent installation or to change them at a later time.

In Linux

1. Create the file **/etc/Acronis/Global.config** and open it in a text editor.
2. Copy and paste the following lines into the file:

```
<?xml version="1.0" ?>
<registry name="Global">
  <key name="HttpProxy">
    <value name="Enabled" type="Tdword">"1"</value>
    <value name="Host" type="TString">"proxy.company.com"</value>
    <value name="Port" type="Tdword">"443"</value>
  </key>
</registry>
```

3. Replace **proxy . company . com** with your proxy server host name/IP address, and **443** with the decimal value of the port number.
4. Save the file.
5. If the backup agent is not installed yet, you can now install it. Otherwise, as the **root** user, restart the agent by executing the following command in any directory:

```
sudo service acronis_mms restart
```

In OS X

1. Create the file **/Library/Application Support/Acronis/Registry/Global.config** and open it in a text editor, such as Text Edit.
2. Copy and paste the following lines into the file:

```
<?xml version="1.0" ?>
<registry name="Global">
  <key name="HttpProxy">
    <value name="Enabled" type="Tdword">"1"</value>
    <value name="Host" type="TString">"proxy.company.com"</value>
    <value name="Port" type="Tdword">"443"</value>
  </key>
</registry>
```

3. Replace **proxy . company . com** with your proxy server host name/IP address, and **443** with the decimal value of the port number.

4. Save the file.
5. If the backup agent is not installed yet, you can now install it. Otherwise, do the following to restart the agent:

- a. Go to **Applications > Utilities > Terminal**

- b. Run the following commands:

```
sudo launchctl stop acronis_mms  
sudo launchctl start acronis_mms
```

In Windows

1. Create a new text document and open it in a text editor, such as Notepad.
2. Copy and paste the following lines into the file:

```
Windows Registry Editor Version 5.00  
  
[HKEY_LOCAL_MACHINE\SOFTWARE\Acronis\Global\HttpProxy]  
"Enabled"=dword:00000001  
"Host"="proxy.company.com"  
"Port"=dword:000001bb
```

3. Replace `proxy.company.com` with your proxy server host name/IP address, and `000001bb` with the hexadecimal value of the port number. For example, `000001bb` is port 443.
4. Save the document as **proxy.reg**.
5. Run the file as an administrator.
6. Confirm that you want to edit the Windows registry.
7. If the backup agent is not installed yet, you can now install it. Otherwise, do the following to restart the agent:
 - a. In the **Start** menu, click **Run**, and then type: **cmd**
 - b. Click **OK**.
 - c. Run the following commands:

```
net stop mms  
net start mms
```

2.6.3 Linux packages

To add the necessary modules to the Linux kernel, the setup program needs the following Linux packages:

- The package with kernel headers or sources. The package version must match the kernel version.
- The GNU Compiler Collection (GCC) compiler system. The GCC version must be the one with which the kernel was compiled.
- The Make tool.
- The Perl interpreter.

The names of these packages vary depending on your Linux distribution.

In Red Hat Enterprise Linux, CentOS, and Fedora, the packages normally will be installed by the setup program. In other distributions, you need to install the packages if they are not installed or do not have the required versions.

Are the required packages already installed?

To check whether the packages are already installed, perform these steps:

1. Run the following command to find out the kernel version and the required GCC version:

```
cat /proc/version
```

This command returns lines similar to the following: **Linux version 2.6.35.6** and **gcc version 4.5.1**

2. Run the following command to check whether the Make tool and the GCC compiler are installed:

```
make -v  
gcc -v
```

For **gcc**, ensure that the version returned by the command is the same as in the **gcc version** in step 1. For **make**, just ensure that the command runs.

3. Check whether the appropriate version of the packages for building kernel modules is installed:

- In Red Hat Enterprise Linux, CentOS, and Fedora, run the following command:

```
yum list installed | grep kernel-devel
```

- In Ubuntu, run the following commands:

```
dpkg --get-selections | grep linux-headers  
dpkg --get-selections | grep linux-image
```

In either case, ensure that the package versions are the same as in **Linux version** in step 1.

4. Run the following command to check whether the Perl interpreter is installed:

```
perl --version
```

If you see the information about the Perl version, the interpreter is installed.

Installing the packages from the repository

The following table lists how to install the required packages in various Linux distributions.

Linux distribution	Package names	How to install
Red Hat Enterprise Linux	kernel-devel gcc make	The setup program will download and install the packages automatically by using your Red Hat subscription.
	perl	Run the following command: <pre>yum install perl</pre>
CentOS Fedora	kernel-devel gcc make	The setup program will download and install the packages automatically.
	perl	Run the following command: <pre>yum install perl</pre>
Ubuntu	linux-headers linux-image gcc make perl	Run the following commands: <pre>sudo apt-get update sudo apt-get install linux-headers-`uname -r` sudo apt-get install linux-image-`uname -r` sudo apt-get install gcc-<package version> sudo apt-get install make sudo apt-get install perl</pre>

The packages will be downloaded from the distribution's repository and installed.

For other Linux distributions, please refer to the distribution's documentation regarding the exact names of the required packages and the ways to install them.

Installing the packages manually

You may need to install the packages **manually** if:

- The machine does not have an active Red Hat subscription or Internet connection.
- The setup program cannot find the **kernel-devel** or **gcc** version corresponding to the kernel version. If the available **kernel-devel** is more recent than your kernel, you need to either update the kernel or install the matching **kernel-devel** version manually.
- You have the required packages on the local network and do not want to spend time for automatic search and downloading.

Obtain the packages from your local network or a trusted third-party website, and install them as follows:

- In Red Hat Enterprise Linux, CentOS, or Fedora, run the following command as the root user:

```
rpm -ivh PACKAGE_FILE1 PACKAGE_FILE2 PACKAGE_FILE3
```
- In Ubuntu, run the following command:

```
sudo dpkg -i PACKAGE_FILE1 PACKAGE_FILE2 PACKAGE_FILE3
```

Example: Installing the packages manually in Fedora 14

Follow these steps to install the required packages in Fedora 14 on a 32-bit machine:

1. Run the following command to determine the kernel version and the required GCC version:

```
cat /proc/version
```

The output of this command includes the following:

```
Linux version 2.6.35.6-45.fc14.i686  
gcc version 4.5.1
```

2. Obtain the **kernel-devel** and **gcc** packages that correspond to this kernel version:

```
kernel-devel-2.6.35.6-45.fc14.i686.rpm  
gcc-4.5.1-4.fc14.i686.rpm
```

3. Obtain the **make** package for Fedora 14:

```
make-3.82-3.fc14.i686
```

4. Install the packages by running the following commands as the root user:

```
rpm -ivh kernel-devel-2.6.35.6-45.fc14.i686.rpm  
rpm -ivh gcc-4.5.1.fc14.i686.rpm  
rpm -ivh make-3.82-3.fc14.i686
```

You can specify all these packages in a single **rpm** command. Installing any of these packages may require installing additional packages to resolve dependencies.

2.6.4 Installing agents

In Windows

1. Ensure that the machine is connected to the Internet.
2. Log on as an administrator and start the setup program.
3. Click **Install**.
4. Specify the credentials of the account to which the machine should be assigned.
5. Click **Show proxy settings** if you want to verify or change the proxy server host name/IP address and port. Otherwise, skip this step. If a proxy server is enabled in Windows, it is detected and used automatically.

6. [Only when installing Agent for VMware] Specify the address and access credentials for the vCenter Server or standalone ESXi host whose virtual machines the agent will back up.
7. [Only when installing on a domain controller] Specify the user account under which the agent service will run. For security reasons, the setup program does not automatically create new accounts on a domain controller.
8. Click **Start installation**.

You can change the installation path and the account for the agent service by clicking **Customize installation settings** on the first step of the installation wizard.

In Linux

1. Ensure that the machine is connected to the Internet.
2. As the root user, run the installation file.
3. Specify the credentials of the account to which the machine should be assigned.
4. Complete the installation procedure.

Troubleshooting information is provided in the file:

/usr/lib/Acronis/BackupAndRecovery/HOWTO.INSTALL

In OS X

1. Ensure that the machine is connected to the Internet.
2. Double-click the installation file (.dmg).
3. Wait while the operating system mounts the installation disk image.
4. Inside the image, run the .pkg file.
5. If prompted, provide administrator credentials.
6. Specify the credentials of the account to which the machine should be assigned.
7. Complete the installation procedure.

2.6.5 Updating agents

Agents starting with the following versions can be updated by using the web interface:

- Agent for Windows, Agent for VMware, Agent for Hyper-V: version 11.9.191 and later
- Agent for Linux: version 11.9.179 and later
- Agent for Mac, Agent for SQL, Agent for Exchange, Agent for Virtuozzo: any version

To find the agent version, select the machine, and then click **Info**.

To update from earlier agent versions, download and install the newest agent manually. To find the download links, click **All machines > Add machine**.

To update an agent by using the web interface

1. Click **Updates**.
The software displays the machines with outdated agent versions.
2. Select the machines on which you want to update the agents. The machines must be online.
3. Click **Update agent**.
The update progress is shown in the status column for each machine.

2.6.6 Uninstalling agents

If you want to modify, repair, or manually update an agent, *do not uninstall it* from the machine. Instead, run the agent setup program, and then choose the corresponding option. If you remove the agent and install it again, the machine will be duplicated in the backup service and the backups of the old machine will not be associated with the new machine.

If you no longer want to back up a physical machine, do the following:

1. Uninstall the agent as described below. Once the agent is uninstalled, the machine is shown as offline in the backup console.
2. In the backup console, select the machine, and then click **Delete**.

If you no longer want to back up virtual machines, do the following:

1. Uninstall Agent for VMware or Agent for Hyper-V as described below. Once the agent is uninstalled, the machines are shown as offline in the backup console.
2. In the backup console, select the machine where Agent for VMware or Agent for Hyper-V was installed, and then click **Delete**.

In Windows

1. Log on as an administrator.
2. Go to **Control panel**, and then select **Programs and Features (Add or Remove Programs in Windows XP) > Acronis Backup Client > Uninstall**.
3. Confirm your decision.

In Linux

1. As the root user, run **/usr/lib/Acronis/BackupAndRecovery/uninstall/uninstall**
2. Confirm your decision.

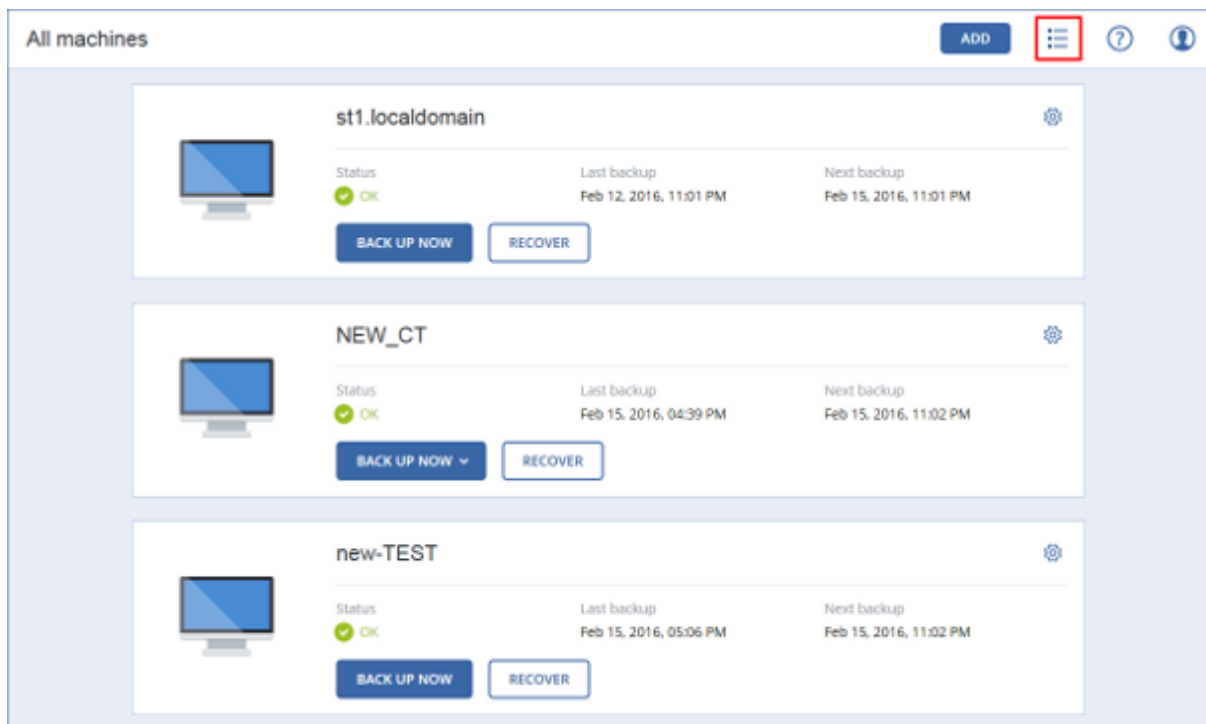
In OS X

1. Double-click the installation file (.dmg).
2. Wait while the operating system mounts the installation disk image.
3. Inside the image, run the **Uninstall.tool** file.
4. If prompted, provide administrator credentials.
5. Confirm your decision.

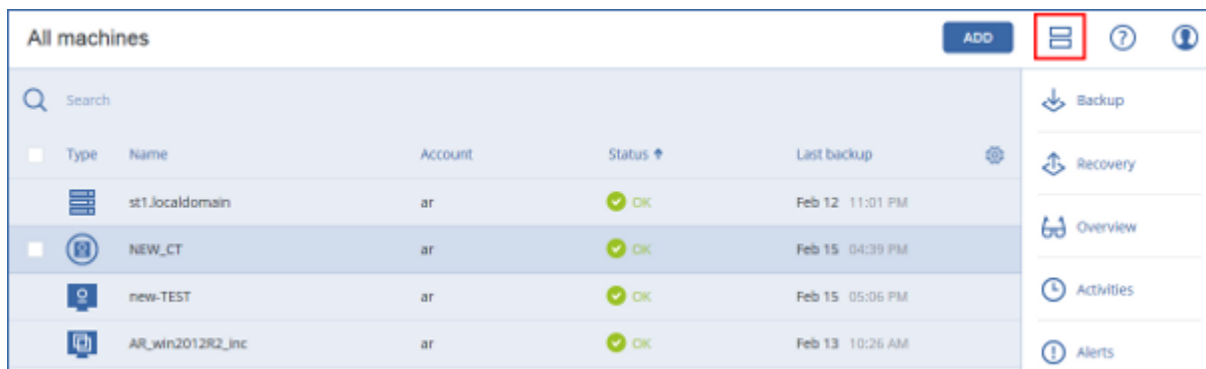
2.7 Backup console views

The backup console has two views: a simple view and a table view. To switch between the views, click the corresponding icon in the top right corner.

The simple view supports a small number of machines.



The table view is enabled automatically when the number of machines becomes large.



Both views provide access to the same features and operations. This document describes access to operations from the table view.

2.8 Backup

A backup plan is a set of rules that specify how the given data will be protected on a given machine.

A backup plan can be applied to multiple machines at the time of its creation, or later.

To create the first backup plan

1. Select the machines that you want to back up.
2. Click **Backup**.

The software displays a new backup plan template.

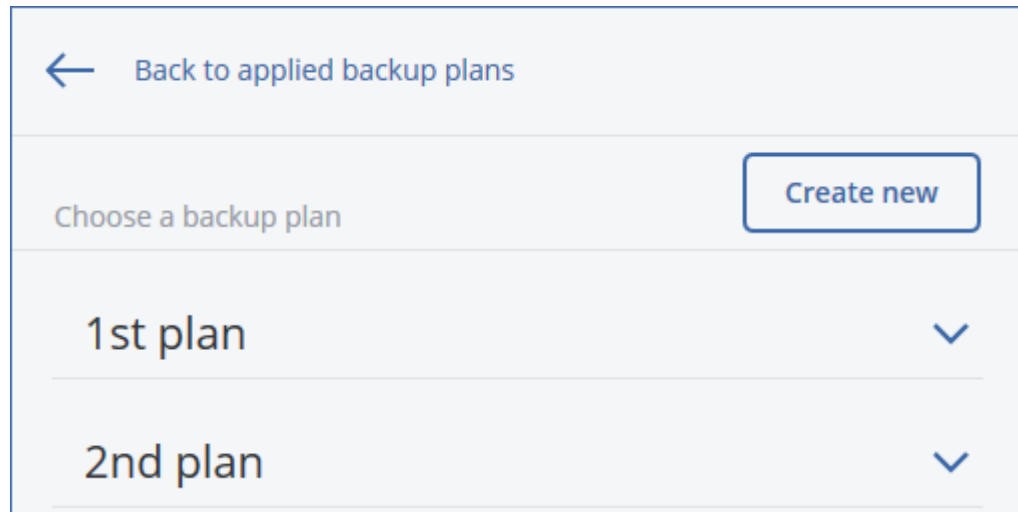
New backup plan	
WHAT TO BACK UP	Entire machine ▼
WHERE TO BACK UP	Cloud storage
SCHEDULE	Monday to Friday at 11:00 PM
HOW LONG TO KEEP	Monthly: 6 months Weekly: 4 weeks Daily: 7 days
ENCRYPTION	<input type="checkbox"/> Off ⓘ
<div>APPLY CANCEL</div>	

3. [Optional] To modify the plan parameters, click the corresponding section of the backup plan panel.
4. [Optional] To modify the backup options, click the gear icon.
5. Click **Apply**.
6. Specify a name for the new backup plan, and then click **OK**.

To apply an existing backup plan

1. Select the machines that you want to back up.
2. Click **Backup**. If a common backup plan is already applied to the selected machines, click **Add backup plan**.

The software displays previously created backup plans.



3. Select a backup plan to apply.
4. Click **Apply**.

2.8.1 Backup plan cheat sheet

The following table summarizes the available backup plan parameters. Use the table to create a backup plan that best fits your needs.

WHAT TO BACK UP	ITEMS TO BACK UP Selection methods	WHERE TO BACK UP	SCHEDULE Backup schemes (not for Cloud)	HOW LONG TO KEEP
Disks/volumes (physical machines)	Direct selection (p. 26) Policy rules (p. 26) File filters (p. 39)	Cloud (p. 30) Local folder (p. 30) Network folder (p. 30)	Always incremental (Single-file) (p. 31) Always full (p. 31) Weekly full, daily incremental (p. 31) Custom (F-D-I) (p. 31)	By backup age (single rule/per backup set) (p. 32) By number of backups (p. 32) Keep indefinitely (p. 32)
Disks/volumes (virtual machines)	Policy rules (p. 26) File filters (p. 39)		Always full (p. 31) Weekly full, daily incremental (p. 31) Custom (F-D-I) (p. 31)	
Files (physical machines only)	Direct selection (p. 28) Policy rules (p. 28) File filters (p. 39)		Always full (p. 31) Weekly full, daily incremental (p. 31) Custom (F-I) (p. 31)	
System state	Direct selection (p. 29)		Always full (p. 31) Weekly full, daily incremental (p. 31) Custom (F-I) (p. 31)	
SQL databases	Direct selection (p. 29)		Always full (p. 31) Weekly full, daily incremental (p. 31) Custom (F-I) (p. 31)	
Exchange databases	Direct selection (p. 30)		Always full (p. 31) Weekly full, daily incremental (p. 31) Custom (F-I) (p. 31)	

2.8.2 Selecting data to back up

2.8.2.1 Selecting disks/volumes

A disk-level backup contains a copy of a disk or a volume in a packaged form. You can recover individual disks, volumes, or files from a disk-level backup. A backup of an entire machine is a backup of all its disks.

There are two ways of selecting disks/volumes: directly on each machine or by using policy rules. You can exclude files from a disk backup by setting the file filters (p. 39).

Direct selection

Direct selection is available only for physical machines.

1. In **What to back up**, select **Disks/volumes**.
2. Click **Items to back up**.
3. In **Select items for backup**, select **Directly**.
4. For each of the machines included in the backup plan, select the check boxes next to the disks or volumes to back up.
5. Click **Done**.

Using policy rules

1. In **What to back up**, select **Disks/volumes**.
2. Click **Items to back up**.
3. In **Select items for backup**, select **Using policy rules**.
4. Select any of the predefined rules, type your own rules, or combine both.
The policy rules will be applied to all of the machines included in the backup plan. If no data meeting at least one of the rules is found on a machine when the backup starts, the backup will fail on that machine.
5. Click **Done**.

Rules for Windows, Linux, and OS X

- **[All volumes]** selects all volumes on machines running Windows and all mounted volumes on machines running Linux or OS X.

Rules for Windows

- Drive letter (for example **C:**) selects the volume with the specified drive letter.
- **[Fixed Volumes (Physical machines)]** selects all volumes of physical machines, other than removable media. Fixed volumes include volumes on SCSI, ATAPI, ATA, SSA, SAS, and SATA devices, and on RAID arrays.
- **[BOOT+SYSTEM]** selects the system and boot volumes. This combination is the minimal set of data that ensures recovery of the operating system from the backup.
- **[Disk 1]** selects the first disk of the machine, including all volumes on that disk. To select another disk, type the corresponding number.

Rules for Linux

- **/dev/hda1** selects the first volume on the first IDE hard disk.
- **/dev/sda1** selects the first volume on the first SCSI hard disk.
- **/dev/md1** selects the first software RAID hard disk.

To select other basic volumes, specify **/dev/xdyN**, where:

- "x" corresponds to the disk type
- "y" corresponds to the disk number (a for the first disk, b for the second disk, and so on)
- "N" is the volume number.

To select a logical volume, specify its name along with the volume group name. For example, to back up two logical volumes, **lv_root** and **lv_bin**, both of which belong to the volume group **vg_mymachine**, specify:

```
/dev/vg_mymachine/lv_root  
/dev/vg_mymachine/lv_bin
```

Rules for OS X

- **[Disk 1]** Selects the first disk of the machine, including all volumes on that disk. To select another disk, type the corresponding number.

2.8.2.2 Selecting files/folders

File-level backup is available only for physical machines.

A file-level backup is not sufficient for recovery of the operating system. Choose file backup if you plan to protect only certain data (the current project, for example). This will reduce the backup size, thus saving storage space.

There are two ways of selecting files: directly on each machine or by using policy rules. Either method allows you to further refine the selection by setting the file filters (p. 39).

Direct selection

1. In **What to back up**, select **Files/folders**.
2. Click **Items to back up**.
3. In **Select items for backup**, select **Directly**.
4. For each of the machines included in the backup plan:
 - a. Click **Select files and folders**.
 - b. Click **Local folder** or **Network share**.
The share must be accessible from the selected machine.
 - c. Browse to the required files/folders or enter the path and click the arrow button. If prompted, specify the user name and password for the shared folder.
 - d. Select the required files/folders.
 - e. Click **Done**.

Using policy rules

1. In **What to back up**, select **Files/folders**.
2. Click **Items to back up**.
3. In **Select items for backup**, select **Using policy rules**.
4. Select any of the predefined rules, type your own rules, or combine both.
The policy rules will be applied to all of the machines included in the backup plan. If no data meeting at least one of the rules is found on a machine when the backup starts, the backup will fail on that machine.
5. Click **Done**.

Selection rules for Windows

- Full path to a file or folder, for example **D:\Work\Text.doc** or **C:\Windows**.
- Templates:
 - **[All Files]** selects all files on all volumes of the machine.
 - **[All Profiles Folder]** selects the folder where all user profiles are located (typically, **C:\Users** or **C:\Documents and Settings**).
- Environment variables:
 - **%ALLUSERSPROFILE%** selects the folder where the common data of all user profiles is located (typically, **C:\ProgramData** or **C:\Documents and Settings\All Users**).
 - **%PROGRAMFILES%** selects the Program Files folder (for example, **C:\Program Files**).

- **%WINDIR%** selects the folder where Windows is located (for example, **C:\Windows**).

You can use other environment variables or a combination of environment variables and text. For example, to select the Java folder in the Program Files folder, type: **%PROGRAMFILES%\Java**.

Selection rules for Linux

- Full path to a file or directory. For example, to back up **file.txt** on the volume **/dev/hda3** mounted on **/home/usr/docs**, specify **/dev/hda3/file.txt** or **/home/usr/docs/file.txt**.
- **/home** selects the home directory of the common users.
- **/root** selects the root user's home directory.
- **/usr** selects the directory for all user-related programs.
- **/etc** selects the directory for system configuration files.

Selection rules for OS X

Full path to a file or directory.

Examples:

- To back up **file.txt** on your desktop, specify **/Users/<username>/Desktop/file.txt**, where **<username>** is your user name.
- To back up all users' home directories, specify **/Users**.
- To back up the directory where the applications are installed, specify **/Applications**.

2.8.2.3 Selecting system state

System state backup is available for machines running Windows Vista and later.

To back up system state, in **What to back up**, select **System state**.

A system state backup is comprised of the following files:

- Task scheduler configuration
- VSS Metadata Store
- Performance counter configuration information
- MSSearch Service
- Background Intelligent Transfer Service (BITS)
- The registry
- Windows Management Instrumentation (WMI)
- Component Services Class registration database

2.8.2.4 Selecting SQL databases

A backup of an SQL database contains the database files (.mdf, .ndf), log files (.ldf), and other associated files. The files are backed with the help of the SQL Writer service. The service must be running at the time that the Volume Shadow Copy Service (VSS) requests a backup or recovery.

To select SQL databases

1. Click **Microsoft SQL**.

Machines with Agent for SQL installed are shown.

2. Browse to the data that you want to back up.

Double-click a machine to view the SQL Server instances it contains. Double-click an instance to view the databases it contains.

3. Select the data that you want to back up. You can select entire instances or individual databases.
 - If you select entire SQL Server instances, all current databases and all databases that are added to the selected instances in the future will be backed up.
 - If you select databases directly, only the selected databases will be backed up.
4. Click **Backup**. If prompted, provide credentials to access the SQL Server data. The account must be a member of the **Backup Operators** or **Administrators** group on the machine and a member of the **sysadmin** role on each of the instances that you are going to back up.

2.8.2.5 Selecting Exchange Server data

The following table summarizes the Microsoft Exchange Server data that you can select for backup and the minimal user rights required to back up the data.

Exchange version	Data items	User rights
2003	Storage groups	Membership in the Organization Management role group.
2007	Storage groups	Membership in the Exchange Organization Administrators role group
2010/2013	Databases	Membership in the Organization Management role group.

A full backup contains all of the selected Exchange Server data.

An incremental backup contains the changed blocks of the database files, the checkpoint files, and a small number of the log files that are more recent than the corresponding database checkpoint. Because changes to the database files are included in the backup, there is no need to back up all the transaction log records since the previous backup. Only the log that is more recent than the checkpoint needs to be replayed after a recovery. This makes for faster recovery and ensures successful database backup, even with circular logging enabled.

The transaction log files are truncated after each successful backup.

To select Exchange Server data

1. Click **Microsoft Exchange**.
Machines with Agent for Exchange installed are shown.
2. Browse to the data that you want to back up.
Double-click a machine to view the databases (storage groups) it contains.
3. Select the data that you want to back up. If prompted, provide the credentials to access the data.
4. Click **Backup**.

2.8.3 Selecting a destination

Click **Where to back up**, and then select one of the following:

- **Cloud storage**
Backups will be stored in the cloud data center.
- **Local folders**
If a single machine is selected, browse to a folder on the selected machine or type the folder path.

If multiple machines are selected, type the folder path. Backups will be stored in this folder on each of the selected physical machines or on the machine where the agent for virtual machines is installed. If the folder does not exist, it will be created.

- **Network folder**

Browse to the required shared folder or enter the path and click the arrow button. If prompted, specify the user name and password for the shared folder.

2.8.4 Schedule

The scheduling parameters depend on the backup destination.

When backing up to cloud storage

By default, backups are performed on a daily basis, Monday to Friday. You can select the time to run the backup.

If you want to change the backup frequency, move the slider, and then specify the backup schedule.

Important *The first backup is full, which means that it is the most time-consuming. All subsequent backups are incremental and take significantly less time.*

When backing up to a local or network folder

You can choose one of the predefined backup schemes or create a custom scheme. A backup scheme is a part of the backup plan that includes the backup schedule and the backup methods.

In **Backup scheme**, select one of the following:

- [Only for disk-level backups] **Always incremental (single-file)**

By default, backups are performed on a daily basis, Monday to Friday. You can select the time to run the backup.

If you want to change the backup frequency, move the slider, and then specify the backup schedule.

The backups use the new single-file backup format (p. 76).

- **Always full**

By default, backups are performed on a daily basis, Monday to Friday. You can select the time to run the backup.

If you want to change the backup frequency, move the slider, and then specify the backup schedule.

All backups are full.

- **Weekly full, Daily incremental**

By default, backups are performed on a daily basis, Monday to Friday. You can modify the days of the week and the time to run the backup.

A full backup is created once a week. All other backups are incremental. The day on which the full backup is created depends on the **Weekly backup** option (click the gear icon, then **Backup options > Weekly backup**).

- **Custom**

Specify schedules for full, differential, and incremental backups.

Differential backup is not available when backing up SQL data, Exchange data, or system state.

Additional scheduling options

With any destination, you can do the following:

- Set a date range for when the schedule is effective. Select the **Run backup plan within a date range** check box, and then specify the date range.
- Disable the schedule. While the schedule is disabled, the retention rules are not applied unless a backup is started manually.
- Introduce a delay from the scheduled time. The delay value for each machine is selected randomly and ranges from zero to the maximum value you specify. You may want to use this setting when backing up multiple machines to a network location, to avoid excessive network load.

Click the gear icon, then **Backup options > Schedule**. Select the **Distribute backup start times within a time window** check box, and then specify the maximum delay. The delay value for each machine is determined when the backup plan is applied to the machine and remains the same until you edit the backup plan and change the maximum delay value.

Note This option is enabled by default, with the maximum delay set to 30 minutes.

2.8.5 Retention rules

1. Click **How long to keep**.
2. In **Cleanup**, choose one of the following:
 - **By backup age** (default)
Specify how long to keep backups created by the backup plan. By default, the retention rules are specified for each backup set (p. 76) separately. If you want to use a single rule for all backups, click **Switch to single rule for all backup sets**.
 - **By number of backups**
Specify the maximum number of backups to keep.
 - **Keep backups indefinitely**

Note A backup stored in a local or network folder cannot be deleted if it has dependent backups that are not subject to deletion. Such backup chains are deleted only when the lifetime of all their backups expires. This requires extra space for storing backups whose deletion is postponed. Also, the backup age and number of backups may exceed the values you specify.

2.8.6 Replication

If you enable backup replication, each backup will be copied to a second location immediately after creation. If earlier backups were not replicated (for example, the network connection was lost), the software also replicates all of the backups that appeared after the last successful replication.

Replicated backups do not depend on the backups remaining in the original location and vice versa. You can recover data from any backup, without access to other locations.

Usage examples

- **Reliable disaster recovery**
Store your backups both on-site (for immediate recovery) and off-site (to secure the backups from local storage failure or a natural disaster).
- **Using the cloud storage to protect data from a natural disaster**
Replicate the backups to the cloud storage by transferring only the data changes.

- **Keeping only the latest recovery points**

Delete older backups from a fast storage according to retention rules, in order to not overuse expensive storage space.

Supported locations

You can replicate a backup *from* any of these locations:

- A local folder
- A network folder

You can replicate a backup *to* any of these locations:

- A local folder
- A network folder
- The cloud storage

To enable backup replication

1. On the backup plan panel, enable the **Replicate backups** switch.
2. In **Where to replicate**, specify the replication destination, as described in "Selecting a destination" (p. 30).
3. In **How long to keep**, specify the retention rules, as described in "Retention rules" (p. 32).

2.8.7 Encryption

We recommend that you encrypt all backups that are stored in the cloud storage, especially if your company is subject to regulatory compliance.

Important *There is no way to recover encrypted backups if you lose or forget the password.*

Encryption in a backup plan

To enable encryption, specify the encryption settings when creating a backup plan. After a backup plan is applied, the encryption settings cannot be modified. To use different encryption settings, create a new backup plan.

To specify the encryption settings in a backup plan

1. On the backup plan panel, enable the **Encryption** switch.
2. Specify and confirm the encryption password.
3. Select one of the following encryption algorithms:
 - **AES 128** – the backups will be encrypted by using the Advanced Encryption Standard (AES) algorithm with a 128-bit key.
 - **AES 192** – the backups will be encrypted by using the AES algorithm with a 192-bit key.
 - **AES 256** – the backups will be encrypted by using the AES algorithm with a 256-bit key.
4. Click **OK**.

Encryption as a machine property

This option is intended for administrators who handle backups of multiple machines. If you need a unique encryption password for each machine or if you need to enforce encryption of backups regardless of the backup plan encryption settings, save the encryption settings on each machine individually.

Saving the encryption settings on a machine does not affect the currently applied backup plans, but will override the encryption settings of all backup plans applied later. Any backup created by these backup plans will be encrypted, even if encryption is disabled. After the settings are saved, they cannot be modified, but you can reset them as described below.

This option is available for machines running Windows or Linux. It is not supported for OS X.

This option can be used on a machine running Agent for VMware. However, be careful if you have more than one Agent for VMware connected to the same vCenter Server. It is mandatory to use the same encryption settings for all of the agents, because there is a kind of load balancing among them.

To save the encryption settings on a machine

1. Log on as an administrator (in Windows) or the root user (in Linux).
2. Run the following script:
 - In Windows: `<installation_path>\PyShell\bin\acropsh.exe -m manage_creds --set-password <encryption_password>`
Here, `<installation_path>` is the backup agent installation path. By default, it is `%ProgramFiles%\BackupClient` in 32-bit Windows and `%ProgramFiles(x86)%\BackupClient` in 64-bit Windows.
 - In Linux: `/usr/sbin/acropsh -m manage_creds --set-password <encryption_password>`

The backups will be encrypted using the AES algorithm with a 256-bit key.

To reset the encryption settings on a machine

1. Log on as an administrator (in Windows) or root user (in Linux).
2. Run the following script:
 - In Windows: `<installation_path>\PyShell\bin\acropsh.exe -m manage_creds --reset`
Here, `<installation_path>` is the backup agent installation path. By default, it is `%ProgramFiles%\BackupClient` in 32-bit Windows and `%ProgramFiles(x86)%\BackupClient` in 64-bit Windows.
 - In Linux: `/usr/sbin/acropsh -m manage_creds --reset`

Important After you reset the encryption settings on a machine, the backups of this machine will fail. To continue backing up the machine, create a new backup plan.

How the encryption works

The AES cryptographic algorithm operates in the Cipher-block chaining (CBC) mode and uses a randomly generated key with a user-defined size of 128, 192 or 256 bits. The larger the key size, the longer it will take for the program to encrypt the backups and the more secure your data will be.

The encryption key is then encrypted with AES-256 using an SHA-256 hash of the password as a key. The password itself is not stored anywhere on the disk or in the backups; the password hash is used for verification purposes. With this two-level security, the backup data is protected from any unauthorized access, but recovering a lost password is not possible.

2.8.8 Starting a backup manually

1. Select a machine that has at least one applied backup plan.
2. Click **Backup**.
3. If more than one backup plans are applied, select the backup plan.
4. Click **Run now** on the backup plan panel.

The backup progress is shown in the **Status** column for the machine.

2.8.9 Backup options

To modify the backup options, click the gear icon next to the backup plan name, and then click **Backup options**.

Availability of the backup options

The set of available backup options depends on:

- The environment the agent operates in (Windows, Linux, OS X).
- The type of the data being backed up (disks, files, virtual machines, application data).
- The backup destination (the cloud storage, local or network folder).

The following table summarizes the availability of the backup options.

	Disk-level backup			File-level backup			Virtual machines			SQL and Exchange
	Windows	Linux	OS X	Windows	Linux	OS X	ESXi	Hyper-V	Virtuozzo	Windows
Backup consolidation (p. 37)	+	+	+	+	+	+	+	+	+	-
Backup validation (p. 37)	+	+	+	+	+	+	+	+	+	+
Changed block tracking (CBT) (p. 38)	+	-	-	-	-	-	+	+	-	-
Compression level (p. 38)	+	+	+	+	+	+	+	+	+	+
Error handling (p. 38)										
Re-attempt, if an error occurs	+	+	+	+	+	+	+	+	+	+
Do not show messages and dialogs while processing (silent mode)	+	+	+	+	+	+	+	+	+	+
Ignore bad sectors	+	+	+	+	+	+	+	+	+	-
Re-attempt, if an error occurs during VM snapshot creation	-	-	-	-	-	-	+	+	+	-

	Disk-level backup			File-level backup			Virtual machines			SQL and Exchange
	Windows	Linux	OS X	Windows	Linux	OS X	ESXi	Hyper-V	Virtuozzo	Windows
Fast incremental/differential backup (p. 39)	+	+	+	-	-	-	-	-	-	-
File-level backup snapshot (p. 40)	-	-	-	+	+	+	-	-	-	-
File-level security (p. 41)	-	-	-	+	-	-	-	-	-	-
File filters (p. 39)	+	+	+	+	+	+	+	+	+	-
Log truncation (p. 41)	-	-	-	-	-	-	+	+	-	SQL only
LVM snapshotting (p. 42)	-	+	-	-	-	-	-	-	-	-
Mount points (p. 42)	-	-	-	+	-	-	-	-	-	-
Multi-volume snapshot (p. 43)	+	-	-	+	-	-	-	-	-	-
Performance (p. 43)	+	+	+	+	+	+	+	+	+	+
Pre/Post commands (p. 44)	+	+	+	+	+	+	+	+	+	+
Pre/Post data capture commands (p. 46)	+	+	+	+	+	+	-	-	-	+
Scheduling (p. 47)										
Distribute start times within a time window	+	+	+	+	+	+	+	+	+	+
Limit the number of simultaneously running backups	-	-	-	-	-	-	+	+	+	-
Sector-by-sector backup (p. 48)	+	+	-	-	-	-	+	+	+	-
Splitting (p. 48)	+	+	+	+	+	+	+	+	+	+

	Disk-level backup			File-level backup			Virtual machines			SQL and Exchange
	Windows	Linux	OS X	Windows	Linux	OS X	ESXi	Hyper-V	Virtuozzo	Windows
Task failure handling (p. 48)	+	+	+	+	+	+	+	+	+	+
Volume Shadow Copy Service (VSS) (p. 49)	+	-	-	+	-	-	-	+	-	+
Volume Shadow Copy Service (VSS) for virtual machines (p. 49)	-	-	-	-	-	-	+	+	-	-
Weekly backup (p. 50)	+	+	+	+	+	+	+	+	+	+
Windows event log (p. 50)	+	-	-	+	-	-	+	+	-	+

2.8.9.1 Backup consolidation

This option is effective for the **Always full**; **Weekly full**, **Daily incremental**; and **Custom** backup schemes.

The preset is: **Disabled**.

Consolidation is the process of combining two or more subsequent backups into a single backup.

If this option is enabled, a backup that should be deleted during cleanup is consolidated with the next dependent backup (incremental or differential).

Otherwise, the backup is retained until all dependent backups become subject to deletion. This helps avoid the potentially time-consuming consolidation, but requires extra space for storing backups whose deletion is postponed. The backups' age or number can exceed the values specified in the retention rules.

Important Please be aware that consolidation is just a method of deletion, but not an alternative to deletion. The resulting backup will not contain data that was present in the deleted backup and was absent from the retained incremental or differential backup.

2.8.9.2 Backup validation

Validation is an operation that checks the possibility of data recovery from a backup. When this option is enabled, each backup created by the backup plan is validated immediately after creation.

The preset is: **Disabled**.

Validation calculates a checksum for every data block that can be recovered from the backup. The only exception is validation of file-level backups that are located in the cloud storage. These backups are validated by checking consistency of the metadata saved in the backup.

Validation is a time-consuming process, even for an incremental or differential backup, which are small in size. This is because the operation validates not only the data physically contained in the backup, but all of the data recoverable by selecting the backup. This requires access to previously created backups.

While the successful validation means a high probability of successful recovery, it does not check all factors that influence the recovery process. If you back up the operating system, we recommend performing a test recovery under the bootable media to a spare hard drive or running a virtual machine from the backup (p. 70) in the ESXi or Hyper-V environment.

2.8.9.3 Changed block tracking (CBT)

This option is effective for disk-level backups of virtual machines and of physical machines running Windows.

The preset is: **Enabled**.

This option determines whether to use Changed Block Tracking (CBT) when performing an incremental or differential backup.

The CBT technology accelerates the backup process. Changes to the disk content are continuously tracked at the block level. When a backup starts, the changes can be immediately saved to the backup.

2.8.9.4 Compression level

The option defines the level of compression applied to the data being backed up. The available levels are: **None, Normal, High, Maximum**.

The preset is: **Normal**.

A higher compression level means that the backup process takes longer, but the resulting backup occupies less space.

The optimal data compression level depends on the type of data being backed up. For example, even maximum compression will not significantly reduce the backup size if the backup contains essentially compressed files, such as .jpg, .pdf or .mp3. However, formats such as .doc or .xls will be compressed well.

2.8.9.5 Error handling

These options enable you to specify how to handle errors that might occur during backup.

Re-attempt, if an error occurs

The preset is: **Enabled. Number of attempts: 30. Interval between attempts: 30 seconds.**

When a recoverable error occurs, the program re-attempts to perform the unsuccessful operation. You can set the time interval and the number of attempts. The attempts will be stopped as soon as the operation succeeds OR the specified number of attempts are performed, depending on which comes first.

For example, if the backup destination on the network becomes unavailable or not reachable, the program will attempt to reach the destination every 30 seconds, but no more than 30 times. The

attempts will be stopped as soon as the connection is resumed OR the specified number of attempts is performed, depending on which comes first.

Note *If the cloud storage is selected as the primary or the second destination, the option value is automatically set to **Enabled**. **Number of attempts: 300**.*

Do not show messages and dialogs while processing (silent mode)

The preset is: **Enabled**.

With the silent mode enabled, the program will automatically handle situations requiring user interaction (except for handling bad sectors, which is defined as a separate option). If an operation cannot continue without user interaction, it will fail. Details of the operation, including errors, if any, can be found in the operation log.

Ignore bad sectors

The preset is: **Disabled**.

When this option is disabled, each time the program comes across a bad sector, the backup activity will be assigned the **Interaction required** status. In order to back up the valid information on a rapidly dying disk, enable ignoring bad sectors. The rest of the data will be backed up and you will be able to mount the resulting disk backup and extract valid files to another disk.

Re-attempt, if an error occurs during VM snapshot creation

The preset is: **Enabled**. **Number of attempts: 3**. **Interval between attempts: 5 minutes**.

When taking a virtual machine snapshot fails, the program re-attempts to perform the unsuccessful operation. You can set the time interval and the number of attempts. The attempts will be stopped as soon as the operation succeeds OR the specified number of attempts are performed, depending on which comes first.

2.8.9.6 Fast incremental/differential backup

This option is effective for incremental and differential disk-level backup.

The preset is: **Enabled**.

Incremental or differential backup captures only data changes. To speed up the backup process, the program determines whether a file has changed or not by the file size and the date/time when the file was last modified. Disabling this feature will make the program compare the entire file contents to those stored in the backup.

2.8.9.7 File filters

File filters define which files and folders to skip during the backup process.

File filters are available for both disk-level and file-level backup.

To enable file filters

1. Select the data to back up.
2. Click the gear icon next to the backup plan name, and then click **Backup options**.
3. Select **File filters**.
4. Use any of the options described below.

Exclude files matching specific criteria

There are two options that function in an inverse manner.

- **Back up only files matching the following criteria**

Example: If you select to back up the entire machine and specify **C:\File.exe** in the filter criteria, only this file will be backed up.

- **Do not back up files matching the following criteria**

Example: If you select to back up the entire machine and specify **C:\File.exe** in the filter criteria, only this file will be skipped.

It is possible to use both options simultaneously. The latter option overrides the former, i.e. if you specify **C:\File.exe** in both fields, this file will be skipped during a backup.

Criteria

- **Full path**

Specify the full path to the file or folder, starting with the drive letter (when backing up Windows) or the root directory (when backing up Linux or OS X).

Both in Windows and Linux/OS X, you can use a forward slash in the file or folder path (as in **C:/Temp/File.tmp**). In Windows, you can also use the traditional backslash (as in **C:\Temp\File.tmp**).

- **Name**

Specify the name of the file or folder, such as **Document.txt**. All files and folders with that name will be selected.

The criteria are *not* case-sensitive. For example, by specifying **C:\Temp**, you will also select **C:\TEMP**, **C:\temp**, and so on.

You can use one or more wildcard characters (*) and (?) in the criterion. These characters can be used both within the full path and in the file or folder name.

The asterisk (*) substitutes for zero or more characters in a file name. For example, the criterion **Doc*.txt** matches files such as **Doc.txt** and **Document.txt**

The question mark (?) substitutes for exactly one character in a file name. For example, the criterion **Doc?.txt** matches files such as **Doc1.txt** and **Docs.txt**, but not the files **Doc.txt** or **Doc11.txt**

Exclude hidden files and folders

Select this check box to skip files and folders that have the **Hidden** attribute (for file systems that are supported by Windows) or that start with a period (.) (for file systems in Linux, such as Ext2 and Ext3). If a folder is hidden, all of its contents (including files that are not hidden) will be excluded.

Exclude system files and folders

This option is effective only for file systems that are supported by Windows. Select this check box to skip files and folders with the **System** attribute. If a folder has the **System** attribute, all of its contents (including files that do not have the **System** attribute) will be excluded.

Tip You can view file or folder attributes in the file/folder properties or by using the `attrib` command. For more information, refer to the Help and Support Center in Windows.

2.8.9.8 File-level backup snapshot

This option is effective only for file-level backup.

This option defines whether to back up files one by one or by taking an instant data snapshot.

Note Files that are stored on network shares are always backed up one by one.

The preset is: **Create snapshot if it is possible.**

You can select one of the following:

- **Create a snapshot if it is possible**
Back up files directly if taking a snapshot is not possible.
- **Always create a snapshot**
The snapshot enables backing up of all files including files opened for exclusive access. The files will be backed up at the same point in time. Choose this setting only if these factors are critical, that is, backing up files without a snapshot does not make sense. If a snapshot cannot be taken, the backup will fail.
- **Do not create a snapshot**
Always back up files directly. Trying to back up files that are opened for exclusive access will result in a read error. Files in the backup may be not time-consistent.

2.8.9.9 File-level security

This option is effective only for file-level backup in Windows.

This option defines whether to back up NTFS permissions for files along with the files.

The preset is: **Enabled.**

When this option is enabled, files and folders are backed up with the original permissions to read, write or execute the files for each user or user group. If you recover a secured file/folder on a machine without the user account specified in the permissions, you may not be able to read or modify this file.

If this option is disabled, the recovered files and folders will inherit the permissions from the folder to which they are recovered or from the disk, if recovered to the root.

Alternatively, you can disable recovery (p. 64) of the security settings. The result will be the same - the files will inherit the permissions from the parent folder.

2.8.9.10 Log truncation

This option is effective for backup of Microsoft SQL Server databases and for disk-level backup with enabled Microsoft SQL Server application backup.

This option defines whether the SQL Server transaction logs are truncated after a successful backup.

The preset is: **Enabled.**

When this option is enabled, a database can be recovered only to a point in time of a backup created by this software. Disable this option if you back up transaction logs by using the native backup engine of Microsoft SQL Server. You will be able to apply the transaction logs after a recovery and thus recover a database to any point in time.

2.8.9.11 LVM snapshotting

This option is effective only for physical machines.

This option is effective for disk-level backup of volumes managed by Linux Logical Volume Manager (LVM). Such volumes are also called logical volumes.

This option defines how a snapshot of a logical volume is taken. The backup software can do this on its own or rely on Linux Logical Volume Manager (LVM).

The preset is: **By the backup software**.

- **By the backup software.** The snapshot data is kept mostly in RAM. The backup is faster and unallocated space on the volume group is not required. Therefore, we recommend changing the preset only if you are experiencing problems with backing up logical volumes.
- **By LVM.** The snapshot is stored on unallocated space of the volume group. If the unallocated space is missing, the snapshot will be taken by the backup software.

2.8.9.12 Mount points

This option is effective only in Windows for a file-level backup of a data source that includes mounted volumes or cluster shared volumes.

This option is effective only when you select for backup a folder that is higher in the folder hierarchy than the mount point. (A mount point is a folder on which an additional volume is logically attached.)

- If such folder (a parent folder) is selected for backup, and the **Mount points** option is enabled, all files located on the mounted volume will be included in the backup. If the **Mount points** option is disabled, the mount point in the backup will be empty.
During recovery of a parent folder, the mount point content will or will not be recovered, depending on whether the **Mount points** option for recovery (p. 65) is enabled or disabled.
- If you select the mount point directly, or select any folder within the mounted volume, the selected folders will be considered as ordinary folders. They will be backed up regardless of the state of the **Mount points** option and recovered regardless of the state of the **Mount points** option for recovery (p. 65).

The preset is: **Disabled**.

Tip. You can back up Hyper-V virtual machines residing on a cluster shared volume by backing up the required files or the entire volume with file-level backup. Just power off the virtual machines to be sure that they are backed up in a consistent state.

Example

Let's assume that the **C:\Data1** folder is a mount point for the mounted volume. The volume contains folders **Folder1** and **Folder2**. You create a backup plan for file-level backup of your data.

If you select the check box for volume C and enable the **Mount points** option, the **C:\Data1** folder in your backup will contain **Folder1** and **Folder2**. When recovering the backed-up data, be aware of proper using the **Mount points** option for recovery (p. 65).

If you select the check box for volume C, and disable the **Mount points** option, the **C:\Data1** folder in your backup will be empty.

If you select the check box for the **Data1**, **Folder1** or **Folder2** folder, the checked folders will be included in the backup as ordinary folders, regardless of the state of the **Mount points** option.

2.8.9.13 Multi-volume snapshot

This option is effective only for Windows operating systems.

This option applies to disk-level backup. This option also applies to file-level backup when the file-level backup is performed by taking a snapshot. (The "File-level backup snapshot" (p. 40) option determines whether a snapshot is taken during file-level backup).

This option determines whether to take snapshots of multiple volumes at the same time or one by one.

The preset is: **Enabled**.

When this option is enabled, snapshots of all volumes being backed up are created simultaneously. Use this option to create a time-consistent backup of data spanning multiple volumes; for instance, for an Oracle database.

When this option is disabled, the volumes' snapshots are taken one after the other. As a result, if the data spans several volumes, the resulting backup may be not consistent.

2.8.9.14 Performance

Process priority

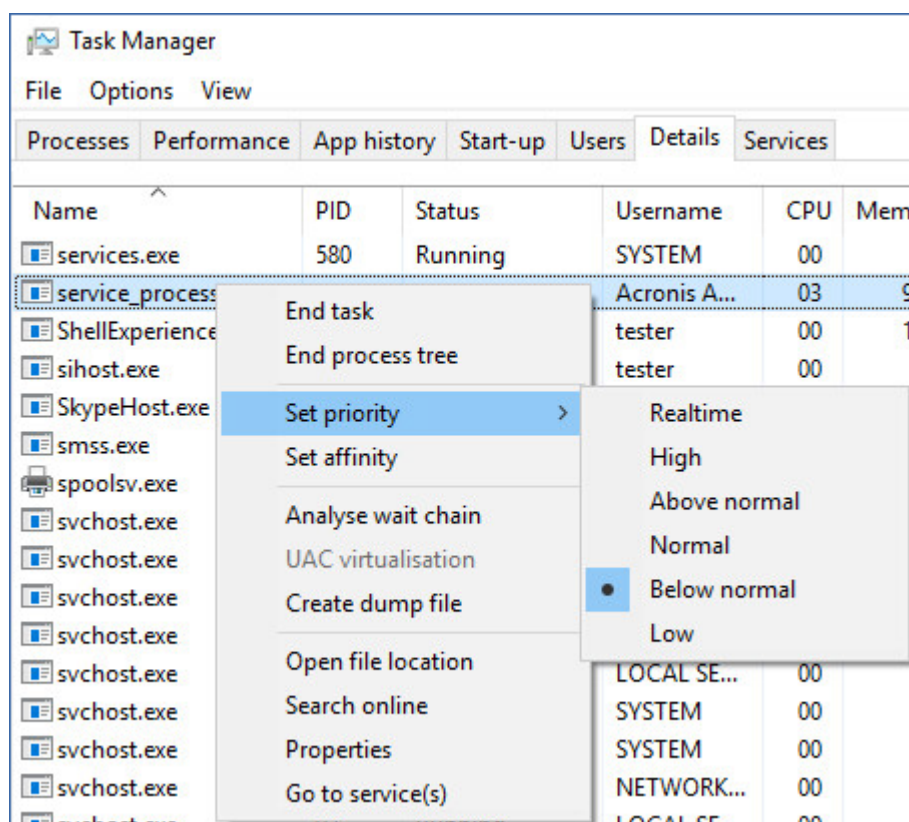
This option defines the priority of the backup process in the operating system.

The available settings are: **Low**, **Normal**, **High**.

The preset is: **Low** (in Windows, corresponds to **Below normal**).

The priority of a process running in a system determines the amount of CPU and system resources allocated to that process. Decreasing the backup priority will free more resources for other applications. Increasing the backup priority might speed up the backup process by requesting the operating system to allocate more resources like the CPU to the backup application. However, the resulting effect will depend on the overall CPU usage and other factors like disk in/out speed or network traffic.

This option sets the priority of the backup process (**service_process.exe**) in Windows and the niceness of the backup process (**service_process**) in Linux and OS X.



Output speed during backup

This option enables you to limit the hard drive writing speed (when backing up to a local folder) or the speed of transferring the backup data through the network (when backing up to a network share or to cloud storage).

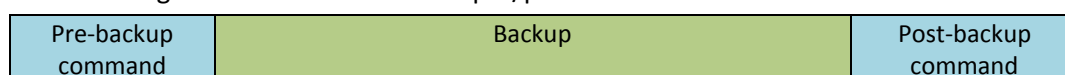
The preset is: **Disabled**.

When this option is enabled, you can specify the maximum allowed output speed in KB/second.

2.8.9.15 Pre/Post commands

The option enables you to define the commands to be automatically executed before and after the backup procedure.

The following scheme illustrates when pre/post commands are executed.



Examples of how you can use the pre/post commands:

- Delete some temporary files from the disk before starting backup.
- Configure a third-party antivirus product to be started each time before the backup starts.
- Selectively copy backups to another location. This option may be useful because the replication configured in a backup plan copies *every* backup to subsequent locations.

The agent performs the replication *after* executing the post-backup command.

The program does not support interactive commands, i.e. commands that require user input (for example, "pause").

Pre-backup command

To specify a command/batch file to be executed before the backup process starts

1. Enable the **Execute a command before the backup** switch.
2. In the **Command...** field, type a command or browse to a batch file. The program does not support interactive commands, i.e. commands that require user input (for example, "pause".)
3. In the **Working directory** field, specify a path to a directory where the command/batch file will be executed.
4. In the **Arguments** field specify the command's execution arguments, if required.
5. Depending on the result you want to obtain, select the appropriate options as described in the table below.
6. Click **Done**.

Check box	Selection			
Fail the backup if the command execution fails*	Selected	Cleared	Selected	Cleared
Do not back up until the command execution is complete	Selected	Selected	Cleared	Cleared
Result				
	Preset Perform the backup only after the command is successfully executed. Fail the backup if the command execution fails.	Perform the backup after the command is executed despite execution failure or success.	N/A	Perform the backup concurrently with the command execution and irrespective of the command execution result.

* A command is considered failed if its exit code is not equal to zero.

Post-backup command

To specify a command/executable file to be executed after the backup is completed

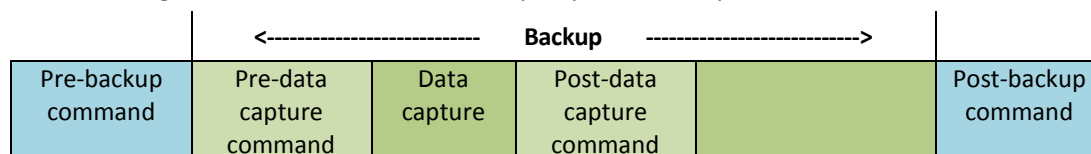
1. Enable the **Execute a command after the backup** switch.
2. In the **Command...** field, type a command or browse to a batch file.
3. In the **Working directory** field, specify a path to a directory where the command/batch file will be executed.
4. In the **Arguments** field, specify the command execution arguments, if required.
5. Select the **Fail the backup if the command execution fails** check box if successful execution of the command is critical for you. The command is considered failed if its exit code is not equal to zero. If the command execution fails, the backup status will be set to **Error**.

When the check box is not selected, the command execution result does not affect the backup failure or success. You can track the command execution result by exploring the **Activities** tab.
6. Click **Done**.

2.8.9.16 Pre/Post data capture commands

The option enables you to define the commands to be automatically executed before and after data capture (that is, taking the data snapshot). Data capture is performed at the beginning of the backup procedure.

The following scheme illustrates when the pre/post data capture commands are executed.



If the Volume Shadow Copy Service option (p. 49) is enabled, the commands' execution and the Microsoft VSS actions will be sequenced as follows:

"Before data capture" commands -> VSS Suspend -> Data capture -> VSS Resume -> "After data capture" commands.

By using the pre/post data capture commands, you can suspend and resume a database or application that is not compatible with VSS. Because the data capture takes seconds, the database or application idle time will be minimal.

Pre-data capture command

To specify a command/batch file to be executed before data capture

1. Enable the **Execute a command before the data capture** switch.
2. In the **Command...** field, type a command or browse to a batch file. The program does not support interactive commands, i.e. commands that require user input (for example, "pause".)
3. In the **Working directory** field, specify a path to a directory where the command/batch file will be executed.
4. In the **Arguments** field specify the command's execution arguments, if required.
5. Depending on the result you want to obtain, select the appropriate options as described in the table below.
6. Click **Done**.

Check box	Selection			
Fail the backup if the command execution fails*	Selected	Cleared	Selected	Cleared
Do not perform the data capture until the command execution is complete	Selected	Selected	Cleared	Cleared
Result				
	Preset Perform the data capture only after the command is successfully executed. Fail the backup if the command execution fails.	Perform the data capture after the command is executed despite execution failure or success.	N/A	Perform the data capture concurrently with the command and irrespective of the command execution result.

* A command is considered failed if its exit code is not equal to zero.

Post-data capture command

To specify a command/batch file to be executed after data capture

1. Enable the **Execute a command after the data capture** switch.
2. In the **Command...** field, type a command or browse to a batch file. The program does not support interactive commands, i.e. commands that require user input (for example, "pause".)
3. In the **Working directory** field, specify a path to a directory where the command/batch file will be executed.
4. In the **Arguments** field specify the command's execution arguments, if required.
5. Depending on the result you want to obtain, select the appropriate options as described in the table below.
6. Click **Done**.

Check box	Selection			
Fail the backup if the command execution fails*	Selected	Cleared	Selected	Cleared
Do not back up until the command execution is complete	Selected	Selected	Cleared	Cleared
Result				
	Preset Continue the backup only after the command is successfully executed.	Continue the backup after the command is executed despite command execution failure or success.	N/A	Continue the backup concurrently with the command execution and irrespective of the command execution result.

* A command is considered failed if its exit code is not equal to zero.

2.8.9.17 Scheduling

This option defines whether backups start as scheduled or with a delay, and how many virtual machines are backed up simultaneously.

The preset is: **Distribute backup start times within a time window. Maximum delay: 30 minutes.**

You can select one of the following:

- **Start all backups exactly as scheduled**
Backups of physical machines will start exactly as scheduled. Virtual machines will be backed up one by one.
- **Distribute start times within a time window**
Backups of physical machines will start with a delay from the scheduled time. The delay value for each machine is selected randomly and ranges from zero to the maximum value you specify. You may want to use this setting when backing up multiple machines to a network location, to avoid excessive network load. The delay value for each machine is determined when the backup plan is applied to the machine and remains the same until you edit the backup plan and change the maximum delay value.
Virtual machines will be backed up one by one.
- **Limit the number of simultaneously running backups by**

This option is available only when a backup plan is applied to multiple virtual machines. This option defines how many virtual machines an agent can back up simultaneously when executing the given backup plan.

If, according to the backup plan, an agent has to start backing up multiple machines at once, it will choose two machines. (To optimize the backup performance, the agent tries to match machines stored on different storages.) Once any of the two backups is completed, the agent chooses the third machine and so on.

You can change the number of virtual machines for an agent to simultaneously back up. The maximum value is 10.

Backups of physical machines will start exactly as scheduled.

2.8.9.18 Sector-by-sector backup

The option is effective only for disk-level backup.

This option defines whether an exact copy of a disk or volume on a physical level is created.

The preset is: **Disabled**.

If this option is enabled, all disk or volume's sectors will be backed up, including unallocated space and those sectors that are free of data. The resulting backup will be equal in size to the disk being backed up (if the "Compression level" (p. 38) option is set to **None**). The software automatically switches to the sector-by-sector mode when backing up drives with unrecognized or unsupported file systems.

2.8.9.19 Splitting

This option is effective for the **Always full**; **Weekly full**, **Daily incremental**; and **Custom** backup schemes.

This option enables you to select the method of splitting of large backups into smaller files.

The preset is: **Automatic**.

The following settings are available:

- **Automatic**
A backup will be split if it exceeds the maximum file size supported by the file system.
- **Fixed size**
Enter the desired file size or select it from the drop-down list.

2.8.9.20 Task failure handling

This option determines the program behavior when execution of a backup plan fails.

If this option is enabled, the program will try to execute the backup plan again. You can specify the number of attempts and the time interval between the attempts. The program stops trying as soon as an attempt completes successfully OR the specified number of attempts is performed, depending on which comes first.

The preset is: **Disabled**.

2.8.9.21 Volume Shadow Copy Service (VSS)

This option is effective only for Windows operating systems.

The option defines whether a Volume Shadow Copy Service (VSS) provider has to notify VSS-aware applications that the backup is about to start. This ensures the consistent state of all data used by the applications; in particular, completion of all database transactions at the moment of taking the data snapshot by the backup software. Data consistency, in turn, ensures that the application will be recovered in the correct state and become operational immediately after recovery.

The preset is: **Enabled. Automatically select snapshot provider.**

You can select one of the following:

- **Automatically select snapshot provider**
Automatically select among the hardware snapshot provider, software snapshot providers, and Microsoft Software Shadow Copy provider.
- **Use Microsoft Software Shadow Copy provider**
We recommend choosing this option when backing up application servers (Microsoft Exchange Server, Microsoft SQL Server, Microsoft SharePoint, or Active Directory).

Disable this option if your database is incompatible with VSS. Snapshots are taken faster, but data consistency of the applications whose transactions are not completed at the time of taking a snapshot cannot be guaranteed. You may use Pre/Post data capture commands (p. 46) to ensure that the data is backed up in a consistent state. For instance, specify pre-data capture commands that will suspend the database and flush all caches to ensure that all transactions are completed; and specify post-data capture commands that will resume the database operations after the snapshot is taken.

Enable VSS full backup

If this option is enabled, logs of Microsoft Exchange Server and of other VSS-aware applications (except for Microsoft SQL Server) will be truncated after each successful full, incremental or differential disk-level backup.

The preset is: **Disabled.**

Leave this option disabled in the following cases:

- If you use Agent for Exchange or third-party software for backing up the Exchange Server data. This is because the log truncation will interfere with the consecutive transaction log backups.
- If you use third-party software for backing up the SQL Server data. The reason for this is that the third-party software will take the resulting disk-level backup for its "own" full backup. As a result, the next differential backup of the SQL Server data will fail. The backups will continue failing until the third-party software creates the next "own" full backup.
- If other VSS-aware applications are running on the machine and you need to keep their logs for any reason.

Enabling this option does not result in the truncation of Microsoft SQL Server logs. To truncate the SQL Server log after a backup, enable the Log truncation (p. 41) backup option.

2.8.9.22 Volume Shadow Copy Service (VSS) for virtual machines

This option defines whether quiesced snapshots of virtual machines are taken. To take a quiesced snapshot, the backup software applies VSS inside a virtual machine by using VMware Tools or Hyper-V Integration Services.

The preset is: **Enabled**.

If this option is enabled, transactions of all VSS-aware applications running in a virtual machine are completed before taking snapshot. If a quiesced snapshot fails after the number of re-attempts specified in the "Error handling" (p. 38) option, and application backup is disabled, a non-quiesced snapshot is taken. If application backup is enabled, the backup fails.

If this option is disabled, a non-quiesced snapshot is taken. The virtual machine will be backed up in a crash-consistent state.

2.8.9.23 Weekly backup

This option determines which backups are considered "weekly" in retention rules and backup schemes. A "weekly" backup is the first backup created after a week starts.

The preset is: **Monday**.

2.8.9.24 Windows event log

This option is effective only in Windows operating systems.

This option defines whether the agents have to log events of the backup operations in the Application Event Log of Windows (to see this log, run eventvwr.exe or select **Control Panel > Administrative tools > Event Viewer**). You can filter the events to be logged.

The preset is: **Disabled**.

2.9 Recovery

2.9.1 Recovery cheat sheet

The following table summarizes the available recovery methods. Use the table to choose a recovery method that best fits your need.

What to recover	Recovery method
Physical machine (Windows or Linux)	Using the web interface (p. 51) Using bootable media (p. 55)
Physical machine (Mac)	Using bootable media (p. 55)
Virtual machine (VMware or Hyper-V)	Using the web interface (p. 54) Using bootable media (p. 55)
Virtual machine or container (Virtuozzo)	Using the web interface (p. 54)
Files/Folders	Using the web interface (p. 56) Downloading files from the cloud storage (p. 57) Using bootable media (p. 58)
System state	Using the web interface (p. 58)
SQL databases	Using the web interface (p. 58)
Exchange databases	Using the web interface (p. 61)
SQL and Exchange databases from application-aware backups	Using the web interface (p. 73)

2.9.2 Creating bootable media

Bootable media is a CD, DVD, USB flash drive, or other removable media that enables you to run the agent without the help of an operating system. The main purpose of bootable media is to recover an operating system that cannot start.

We highly recommend that you create and test a bootable media as soon as you start using disk-level backup. Also, it is a good practice to re-create the media after each major update of the backup agent.

You can recover either Windows or Linux by using the same media. To recover OS X, create a separate media on a machine running OS X.

To create bootable media in Windows or Linux

1. Download the bootable media ISO file. To download the file, select a machine, and then click **Recover > More ways to recover... > Download ISO image**.
2. Do any of the following:
 - Burn a CD/DVD using the ISO file.
 - Create a bootable USB flash drive by using the ISO file and one of the free tools available online.
Use ISO to USB or RUFUS if you need to boot an UEFI machine, Win32DiskImager for a BIOS machine. In Linux, using the dd utility makes sense.
 - Connect the ISO file as a CD/DVD drive to the virtual machine that you want to recover.

To create bootable media in OS X

1. On a machine where Agent for Mac is installed, click **Applications > Rescue Media Builder**.
2. The software displays the connected removable media. Select the one that you want to make bootable.

Warning All data on the disk will be erased.

3. Click **Create**.
4. Wait while the software creates the bootable media.

2.9.3 Recovering a machine

2.9.3.1 Physical machine

This section describes recovery of physical machines by using the web interface.

Use bootable media instead of the web interface if you need to recover:

- OS X
- Any operating system to bare metal or to an offline machine

Recovery of an operating system requires a reboot. You can choose whether to restart the machine automatically or assign it the **Interaction required** status. The recovered operating system goes online automatically.

To recover a physical machine

1. Select the backed-up machine.
2. Click **Recovery**.
3. Select a recovery point. Note that recovery points are filtered by location.

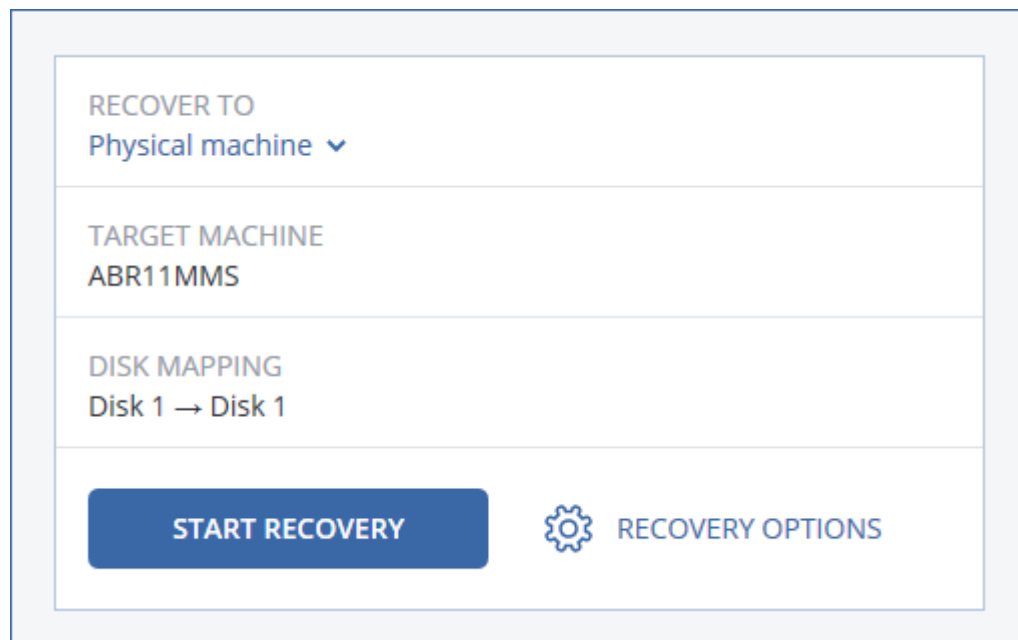
If the machine is offline, the recovery points are not displayed. Do any of the following:

- If the backup is located in the cloud storage, click **Select machine**, select a target machine that is online, and then select a recovery point.
- Select a recovery point on the Backups tab (p. 68).
- Recover the machine as described in "Recovering disks by using bootable media" (p. 55).

4. Click **Recover** > **Entire machine**.

The software automatically maps the disks from the backup to the disks of the target machine.

- To recover to another physical machine, click **Target machine**, and then select a target machine that is online.
- If the disk mapping fails, recover the machine as described in "Recovering disks by using bootable media" (p. 55). The media enables you to choose disks for recovery and to map the disks manually.



5. Click **Start recovery**.

6. Confirm that you want to overwrite the disks with their backed-up versions. Choose whether to restart the machine automatically.

The recovery progress is shown on the **Activities** tab.

2.9.3.2 Physical machine to virtual

This section describes recovery of a physical machine as a virtual machine by using the web interface. This operation can be performed if at least one Agent for VMware or Agent for Hyper-V is installed and registered.

For more information about P2V migration, refer to "Machine migration" (p. 74).

To recover a physical machine as a virtual machine

1. Select the backed-up machine.
2. Click **Recovery**.
3. Select a recovery point. Note that recovery points are filtered by location.

If the machine is offline, the recovery points are not displayed. Do any of the following:

- If the backup is located in the cloud storage, click **Select machine**, select a machine that is online, and then select a recovery point.
 - Select a recovery point on the Backups tab (p. 68).
 - Recover the machine as described in "Recovering disks by using bootable media" (p. 55).
4. Click **Recover > Entire machine**.
 5. In **Recover to**, select **Virtual machine**.
 6. Click **Target machine**.
 - a. Select the hypervisor (**VMware ESXi** or **Hyper-V**).
At least one Agent for VMware or Agent for Hyper-V must be installed.
 - b. Select whether to recover to a new or existing machine. The new machine option is preferable as it does not require the disk configuration of the target machine to exactly match the disk configuration in the backup.
 - c. Select the host and specify the new machine name, or select an existing target machine.
 - d. Click **OK**.
 7. [Optional] When recovering to a new machine, you can also do the following:
 - Click **Datastore** for ESXi or **Path** for Hyper-V, and then select the datastore (storage) for the virtual machine.
 - Click **VM settings** to change the memory size, the number of processors, and the network connections of the virtual machine.

RECOVER TO
Virtual machine ▾

TARGET MACHINE
New machine on 10.250.151.100 New

DATASTORE
datastore3

VM SETTINGS
Memory: 1.00 GB
Virtual processors: 1
Network adapters: 1

START RECOVERY ⚙️ RECOVERY OPTIONS

8. Click **Start recovery**.
 9. When recovering to an existing virtual machine, confirm that you want to overwrite the disks.
- The recovery progress is shown on the **Activities** tab.

2.9.3.3 Virtual machine

A virtual machine must be stopped during the recovery to this machine. The software stops the machine without a prompt. When the recovery is completed, you have to start the machine manually.

This behavior can be changed by using the VM power management recovery option (click **Recovery options > VM power management**).

To recover a virtual machine

1. Do one of the following:
 - Select a backed-up machine, click **Recovery**, and then select a recovery point.
 - Select a recovery point on the Backups tab (p. 68).
2. Click **Recover > Entire machine**.
3. If you want to recover to a physical machine, select **Physical machine** in **Recover to**. Otherwise, skip this step.

Recovery to a physical machine is possible only if the disk configuration of the target machine exactly matches the disk configuration in the backup.

If this is the case, continue to step 4 in "Physical machine" (p. 51). Otherwise, we recommend that you perform the V2P migration by using bootable media (p. 55).
4. The software automatically selects the original machine as the target machine.

To recover to another virtual machine, click **Target machine**, and then do the following:

 - a. Select the hypervisor (**VMware ESXi**, **Hyper-V**, or **Virtuozzo**).

Only Virtuozzo virtual machines can be recovered to Virtuozzo. For more information about V2V migration, refer to "Machine migration" (p. 74).
 - b. Select whether to recover to a new or existing machine.
 - c. Select the host and specify the new machine name, or select an existing target machine.
 - d. Click **OK**.
5. [Optional] When recovering to a new machine, you can also do the following:
 - Click **Datastore** for ESXi or **Path** for Hyper-V and Virtuozzo, and then select the datastore (storage) for the virtual machine.

- Click **VM settings** to change the memory size, the number of processors, and the network connections of the virtual machine.

The screenshot shows a configuration window for a recovery operation. It is divided into several sections:

- RECOVER TO:** A dropdown menu currently set to "Virtual machine".
- TARGET MACHINE:** Displays "New machine on 10.250.150.100" with a "New" button to its right.
- DATASTORE:** Displays "datastore3".
- VM SETTINGS:**
 - Memory: 1.00 GB
 - Virtual processors: 1
 - Network adapters: 1
- Bottom Bar:** Contains a large blue "START RECOVERY" button, a gear icon, and the text "RECOVERY OPTIONS".

6. Click **Start recovery**.
 7. When recovering to an existing virtual machine, confirm that you want to overwrite the disks.
- The recovery progress is shown on the **Activities** tab.

2.9.3.4 Recovering disks by using bootable media

For information about how to create bootable media, refer to "Creating bootable media" (p. 51).

To recover disks by using bootable media

1. Boot the target machine by using bootable media.
2. Click **Manage this machine locally** or click **Rescue Bootable Media** twice, depending on the media type you are using.
3. If a proxy server is enabled in your network, click **Tools > Proxy server**, and then specify the proxy server host name/IP address and port. Otherwise, skip this step.
4. On the welcome screen, click **Recover**.
5. Click **Select data**, and then click **Browse**.
6. Specify the backup location:
 - To recover from cloud storage, select **Cloud storage**. Enter the credentials of the account to which the backed up machine is assigned.
 - To recover from a local or a network folder, browse to the folder under **Local folders** or **Network folders**.

Click **OK** to confirm your selection.

7. Select the backup from which you want to recover the data. If prompted, type the password for the backup.
8. In **Backup contents**, select the disks that you want to recover. Click **OK** to confirm your selection.
9. Under **Where to recover**, the software automatically maps the selected disks to the target disks. If the mapping is not successful or if you are unsatisfied with the mapping result, you can re-map disks manually.

Changing disk layout may affect the operating system bootability. Please use the original machine's disk layout unless you feel fully confident of success.

10. [When recovering Linux] If the backed-up machine had logical volumes (LVM) and you want to reproduce the original LVM structure:
 - a. Ensure that the number of the target machine disks and each disk capacity are equal to or exceed those of the original machine, and then click **Apply RAID/LVM**.
 - b. Review the volume structure, and then click **Apply RAID/LVM** to create it.
11. If you are recovering an operating system to dissimilar hardware, choose to use the Universal Restore feature.
 [When recovering Windows] Click **Add folder** and specify the path to the location where drivers for the motherboard, mass storage, and network adapter are stored. If the target hardware has a specific mass storage controller, such as RAID (especially NVIDIA RAID) or a fibre channel adapter, explicitly specify the mass storage drivers for them. To do this, in **Mass storage drivers to install anyway**, click **Add driver**, and then specify the drivers.
12. [Optional] Click **Recovery options** to specify additional settings.
13. Click **OK** to start the recovery.

2.9.4 Recovering files

2.9.4.1 Recovering files by using the web interface

1. Select the machine that originally contained the data that you want to recover.
2. Click **Recovery**.
3. Select the recovery point. Note that recovery points are filtered by location.
 If the selected machine is physical and it is offline, recovery points are not displayed. Select a recovery point on the Backups tab (p. 68) or use other ways to recover:
 - Download the files from the cloud storage (p. 57)
 - Use bootable media (p. 58)
4. Click **Recover > Files/folders**.
5. Select the files that you want to recover.
6. If you want to save the files as a .zip file, click **Download**, select the location to save the data to, and click **Save**. Otherwise, skip this step.
7. Click **Recover**.
8. Select the recovery destination. You can select the original location or any local or network folder.
 Files from virtual machines can be recovered to a network folder, or to the machine where Agent for VMware, Agent for Hyper-V, or Agent for Virtuozzo is installed. If you select a network folder, it must be accessible from that machine.
9. Click **Start recovery**.
10. Select one of the file overwriting options:

- **Overwrite existing files**
- **Overwrite an existing file if it is older**
- **Do not overwrite existing files**

The recovery progress is shown on the **Activities** tab.

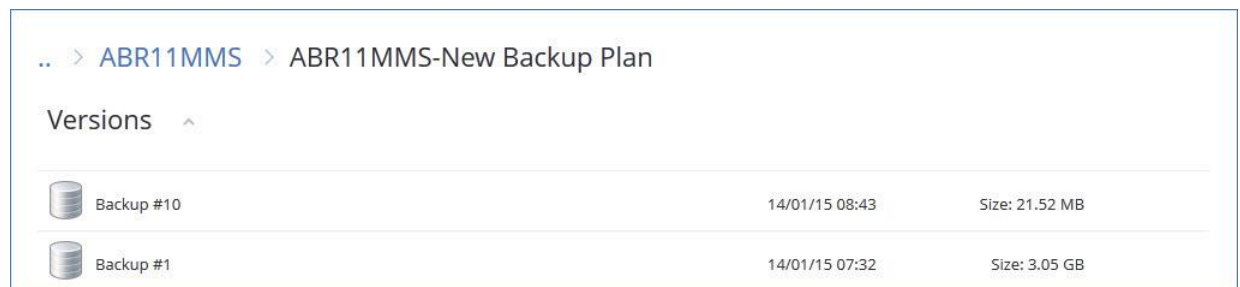
2.9.4.2 Downloading files from the cloud storage

You can browse the cloud storage, view the contents of the backups, and download files that you need.

Limitation: Backups of system state, SQL databases, and Exchange databases cannot be browsed.

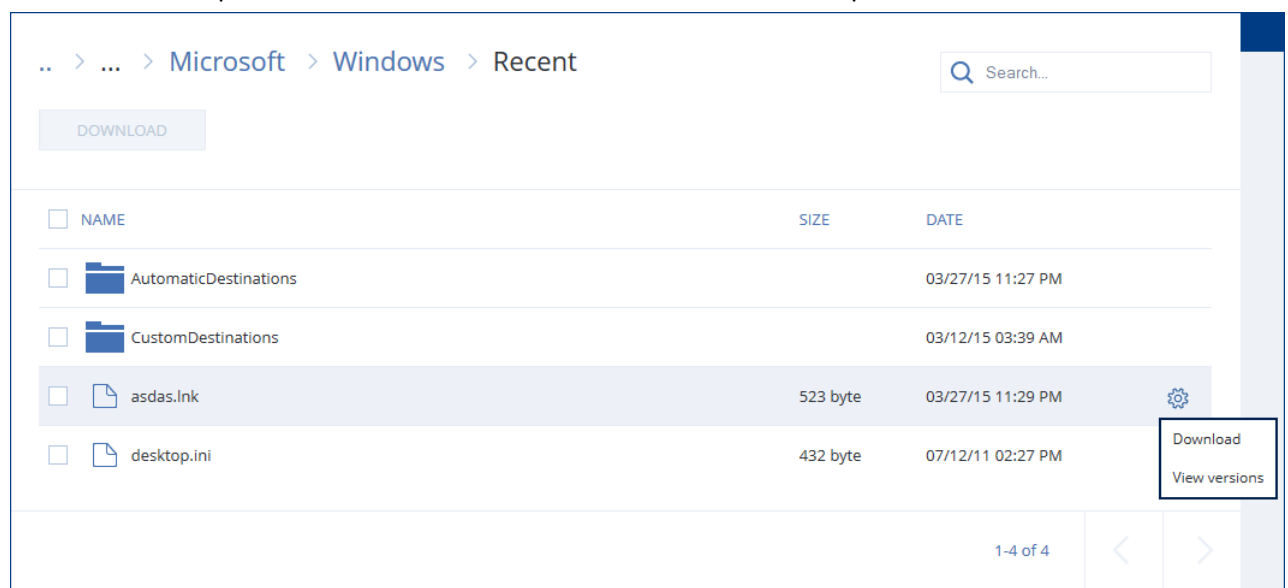
To download files from the cloud storage

1. Select a machine that was backed up.
2. Click **Recover > More ways to recover... > Download files**.
3. Enter the credentials of the account to which the backed up machine is assigned.
4. [When browsing disk-level backups] Under **Versions**, click the backup from which you want to recover the files.



[When browsing file-level backups] You can select the backup date and time in the next step, under the gear icon located to the right of the selected file. By default, files are recovered from the latest backup.

5. Browse to the required folder or use search to obtain the list of the required files and folders.



6. Select the check boxes for the items you need to recover, and then click **Download**.
If you select a single file, it will be downloaded as is. Otherwise, the selected data will be archived into a .zip file.

7. Select the location to save the data to, and then click **Save**.

2.9.4.3 Recovering files by using bootable media

For information about how to create bootable media, refer to "Creating bootable media" (p. 51).

To recover files by using bootable media

1. Boot the target machine, by using the bootable media.
2. Click **Manage this machine locally** or click **Rescue Bootable Media** twice, depending on the media type you are using.
3. If a proxy server is enabled in your network, click **Tools > Proxy server**, and then specify the proxy server host name/IP address and port. Otherwise, skip this step.
4. On the welcome screen, click **Recover**.
5. Click **Select data**, and then click **Browse**.
6. Specify the backup location:
 - To recover from cloud storage, select **Cloud storage**. Enter the credentials of the account to which the backed up machine is assigned.
 - To recover from a local or a network folder, browse to the folder under **Local folders** or **Network folders**.Click **OK** to confirm your selection.
7. Select the backup from which you want to recover the data. If prompted, type the password for the backup.
8. In **Backup contents**, select **Folders/files**.
9. Select the data that you want to recover. Click **OK** to confirm your selection.
10. Under **Where to recover**, specify a folder. Optionally, you can prohibit overwriting of newer versions of files or exclude some files from recovery.
11. [Optional] Click **Recovery options** to specify additional settings.
12. Click **OK** to start the recovery.

2.9.5 Recovering system state

1. Select the machine for which you want to recover the system state.
2. Click **Recovery**.
3. Select a system state recovery point. Note that recovery points are filtered by location.
4. Click **Recover system state**.
5. Confirm that you want to overwrite the system state with its backed-up version.

The recovery progress is shown on the **Activities** tab.

2.9.6 Recovering SQL databases

This section describes how to recover SQL databases from the backups performed by Agent for SQL. For information about recovering SQL databases from application-aware backups of virtual machines, refer to "Recovering databases from application-aware backups" (p. 73).

The backup service enables you to recover SQL databases to a SQL Server instance, if Agent for SQL is installed on the machine running the instance. You will need to provide credentials for an account that is a member of the **Backup Operators** or **Administrators** group on the machine and a member of the **sysadmin** role on the target instance.

Alternatively, you can recover the databases as files. This can be useful if you need to recover databases to a machine where Agent for SQL is not installed, or you need to extract data for data mining, audit, or further processing by third-party tools. You can attach the SQL database files to a SQL Server instance, as described in "Attaching SQL Server databases" (p. 60).

System databases are basically recovered in the same way as user databases. The peculiarities of system database recovery are described in "Recovering system databases" (p. 60).

To recover SQL databases

1. Click **Microsoft SQL**.

Machines with Agent for SQL installed are shown.

2. Select the machine that originally contained the data that you want to recover.

3. Click **Recovery**.

4. Select a recovery point. Note that recovery points are filtered by location.

If the machine is offline, the recovery points are not displayed. Do one of the following:

- If the backup is located in the cloud storage, click **Select machine**, select an online machine that has Agent for SQL, and then select a recovery point.
- Select a recovery point on the Backups tab (p. 68).

The machine chosen for browsing in either of the above actions becomes a target machine for the SQL databases recovery.

5. Click **Recover SQL databases**.

6. Select the data that you want to recover. Double-click an instance to view the databases it contains.

7. If you want to recover the databases as files, click **Recover as files**, select a local or a network folder to save the files to, and then click **Recover**. Otherwise, skip this step.

8. Click **Recover**.

9. By default, the databases are recovered to the original ones. If the original database does not exist, it will be recreated. You can select another machine or another SQL Server instance to recover the databases to.

To recover a database as a different one to the same instance:

- a. Click the database name.
- b. In **Recover to**, select **New database**.
- c. Specify the new database name.
- d. Specify the new database path and log path. The folder you specify must not contain the original database and log files.

10. [Optional] To change the database state after recovery, click the database name, and then choose one of the following states:

- **Ready to use (RESTORE WITH RECOVERY)** (default)

After the recovery completes, the database will be ready for use. Users will have full access to it. The software will roll back all uncommitted transactions of the recovered database that are stored in the transaction logs. You will not be able to recover additional transaction logs from the native Microsoft SQL backups.

- **Non-operational (RESTORE WITH NORECOVERY)**

After the recovery completes, the database will be non-operational. Users will have no access to it. The software will keep all uncommitted transactions of the recovered database. You will be able to recover additional transaction logs from the native Microsoft SQL backups and thus reach the necessary recovery point.

- **Read-only (RESTORE WITH STANDBY)**

After the recovery completes, users will have read-only access to the database. The software will undo any uncommitted transactions. However, it will save the undo actions in a temporary standby file so that the recovery effects can be reverted.

This value is primarily used to detect the point in time when a SQL Server error occurred.

11. Click **Start recovery**.

12. If the original databases were selected as the destination, confirm overwriting the databases with their backed-up versions.

The recovery progress is shown on the **Activities** tab.

2.9.6.1 Recovering system databases

All system databases of an instance are recovered at once. When recovering system databases, the software automatically restarts the destination instance in the single-user mode. After the recovery completes, the software restarts the instance and recovers other databases (if any).

Other things to consider when recovering system databases:

- System databases can only be recovered to an instance of the same version as the original instance.
- System databases are always recovered in the "ready to use" state.

Recovering the master database

System databases include the **master** database. The **master** database records information about all databases of the instance. Hence, the **master** database in a backup contains information about databases which existed in the instance at the time of the backup. After recovering the **master** database, you may need to do the following:

- Databases that have appeared in the instance after the backup was done are not visible by the instance. To bring these databases back to production, attach them to the instance manually by using SQL Server Management Studio.
- Databases that have been deleted after the backup was done are displayed as offline in the instance. Delete these databases by using SQL Server Management Studio.

2.9.6.2 Attaching SQL Server databases

This section describes how to attach a database in SQL Server by using SQL Server Management Studio. Only one database can be attached at a time.

Attaching a database requires any of the following permissions: **CREATE DATABASE**, **CREATE ANY DATABASE**, or **ALTER ANY DATABASE**. Normally, these permissions are granted to the **sysadmin** role of the instance.

To attach a database

1. Run Microsoft SQL Server Management Studio.
2. Connect to the required SQL Server instance, and then expand the instance.
3. Right click **Databases** and click **Attach**.
4. Click **Add**.
5. In the **Locate Database Files** dialog box, find and select the .mdf file of the database.
6. In the **Database Details** section, make sure that the rest of database files (.ndf and .ldf files) are found.

Details. SQL Server database files may not be found automatically, if:

- They are not in the default location, or they are not in the same folder as the primary database file (.mdf). Solution: Specify the path to the required files manually in the **Current File Path** column.
- You have recovered an incomplete set of files that make up the database. Solution: Recover the missing SQL Server database files from the backup.

7. When all of the files are found, click **OK**.

2.9.7 Recovering Exchange data

This section describes how to recover Exchange databases from the backups performed by Agent for Exchange. For information about recovering Exchange databases from application-aware backups of virtual machines, refer to "Recovering databases from application-aware backups" (p. 73).

The backup service enables you to recover Exchange Server data to the original Exchange Server.

The following table summarizes the Exchange Server data that you can select for recovery and the minimal user rights required to recover the data.

Exchange version	Data items	User rights
2003	Storage groups	Membership in the Organization Management role group.
2007	Storage groups	Membership in the Exchange Organization Administrators role group.
2010/2013	Databases	Membership in the Organization Management role group.

Alternatively, you can recover the databases (storage groups) as files. The database files, along with transaction log files, will be extracted from the backup to a folder that you specify. This can be useful if you need to extract data for an audit or further processing by third-party tools, or when the recovery fails for some reason and you are looking for a workaround to mount the databases manually (p. 62).

To recover Exchange data

We will refer to both databases and storage groups as "databases" throughout this procedure.

1. Click **Microsoft Exchange**.

Machines with Agent for Exchange installed are shown.

2. Select the machine that originally contained the data that you want to recover.

3. Click **Recovery**.

4. Select a recovery point. Note that recovery points are filtered by location.

If the machine is offline, the recovery points are not displayed. Use other ways to recover:

- If the backup is located in the cloud storage, click **Select machine**, select an online machine that has Agent for Exchange, and then select a recovery point.
- Select a recovery point on the Backups tab (p. 68).

The machine chosen for browsing in either of the above actions becomes a target machine for the Exchange data recovery.

5. Click **Recover Exchange databases**.

6. Select the data that you want to recover.

7. If you want to recover the databases as files, click **Recover as files**, select a local or a network folder to save the files to, and then click **Recover**. Otherwise, skip this step.
8. Click **Recover**. If prompted, provide credentials to access the Exchange Server.
9. By default, the databases are recovered to the original ones. If the original database does not exist, it will be recreated.
To recover a database as a different one:
 - a. Click the database name.
 - b. In **Recover to**, select **New database**.
 - c. Specify the new database name.
 - d. Specify the new database path and log path. The folder you specify must not contain the original database and log files.
10. Click **Start recovery**.
11. If the databases are recovered to the original ones, confirm overwriting the databases with their backed-up versions.

The recovery progress is shown on the **Activities** tab.

2.9.7.1 Mounting Exchange Server databases

After recovering the database files, you can bring the databases online by mounting them. Mounting is performed by using Exchange Management Console, Exchange System Manager, or Exchange Management Shell.

The recovered databases will be in a Dirty Shutdown state. A database that is in a Dirty Shutdown state can be mounted by the system if it is recovered to its original location (that is, information about the original database is present in Active Directory). When recovering a database to an alternate location (such as a new database or as the recovery database), the database cannot be mounted until you bring it to a Clean Shutdown state by using the **Eseutil /r <Enn>** command. **<Enn>** specifies the log file prefix for the database (or storage group that contains the database) into which you need to apply the transaction log files.

The account you use to attach a database must be delegated an Exchange Server Administrator role and a local Administrators group for the target server.

For details about how to mount databases, see the following articles:

- Exchange 2016: <http://technet.microsoft.com/en-us/library/aa998871.aspx>
- Exchange 2013: [http://technet.microsoft.com/en-us/library/aa998871\(v=EXCHG.150\).aspx](http://technet.microsoft.com/en-us/library/aa998871(v=EXCHG.150).aspx)
- Exchange 2010: [http://technet.microsoft.com/en-us/library/aa998871\(v=EXCHG.141\).aspx](http://technet.microsoft.com/en-us/library/aa998871(v=EXCHG.141).aspx)
- Exchange 2007: [http://technet.microsoft.com/en-us/library/aa998871\(v=EXCHG.80\).aspx](http://technet.microsoft.com/en-us/library/aa998871(v=EXCHG.80).aspx)
- Exchange 2003: <http://technet.microsoft.com/en-us/library/bb124040.aspx>

2.9.8 Recovery options

To modify the recovery options, click **Recovery options** when configuring recovery.

Availability of the recovery options

The set of available recovery options depends on:

- The environment the agent that performs recovery operates in (Windows, Linux, OS X, or bootable media).

- The type of data being recovered (disks, files, virtual machines, application data).

The following table summarizes the availability of the recovery options.

	Disks			Files				Virtual machines	SQL and Exchange
	Windows	Linux	Bootable media	Windows	Linux	OS X	Bootable media	ESXi, Hyper-V, and Virtuozzo	Windows
Backup validation (p. 63)	+	+	+	+	+	+	+	+	+
Date and time for files (p. 64)	-	-	-	+	+	+	+	-	-
Error handling (p. 64)	+	+	+	+	+	+	+	+	+
File exclusions (p. 64)	-	-	-	+	+	+	+	-	-
File-level security (p. 64)	-	-	-	+	+	+	+	-	-
Flashback (p. 65)	-	-	-	-	-	-	-	+	-
Full path recovery (p. 65)	-	-	-	+	+	+	+	-	-
Mount points (p. 65)	-	-	-	+	-	-	-	-	-
Performance (p. 65)	+	+	-	+	+	+	-	+	+
Pre/post commands (p. 66)	+	+	-	+	+	+	-	+	+
Restart during recovery (p. 67)	+	+	+	+	+	-	+	-	-
SID changing (p. 67)	+	-	-	-	-	-	-	-	-
VM power management (p. 67)	-	-	-	-	-	-	-	+	-
Windows event log (p. 68)	+	-	-	+	-	-	-	Hyper-V only	+

2.9.8.1 Backup validation

This option defines whether to validate a backup to ensure that the backup is not corrupted, before data is recovered from it.

The preset is: **Disabled**.

Validation calculates a checksum for every data block saved in the backup. The only exception is validation of file-level backups that are located in the cloud storage. These backups are validated by checking consistency of the meta information saved in the backup.

Validation is a time-consuming process, even for an incremental or differential backup, which are small in size. This is because the operation validates not only the data physically contained in the backup, but all of the data recoverable by selecting the backup. This requires access to previously created backups.

2.9.8.2 Date and time for files

This option is effective only when recovering files.

This option defines whether to recover the files' date and time from the backup or assign the files the current date and time.

If this option is enabled, the files will be assigned the current date and time.

The preset is: **Enabled**.

2.9.8.3 Error handling

These options enable you to specify how to handle errors that might occur during recovery.

Re-attempt, if an error occurs

The preset is: **Enabled. Number of attempts: 30. Interval between attempts: 30 seconds.**

When a recoverable error occurs, the program re-attempts to perform the unsuccessful operation. You can set the time interval and the number of attempts. The attempts will be stopped as soon as the operation succeeds OR the specified number of attempts are performed, depending on which comes first.

Do not show messages and dialogs while processing (silent mode)

The preset is: **Disabled**.

With the silent mode enabled, the program will automatically handle situations requiring user interaction where possible. If an operation cannot continue without user interaction, it will fail. Details of the operation, including errors, if any, can be found in the operation log.

2.9.8.4 File exclusions

This option is effective only when recovering files.

The option defines which files and folders to skip during the recovery process and thus exclude from the list of recovered items.

Note Exclusions override the selection of data items to recover. For example, if you select to recover file *MyFile.tmp* and to exclude all *.tmp* files, file *MyFile.tmp* will not be recovered.

2.9.8.5 File-level security

This option is effective only for recovery from file-level backup of Windows files.

This option defines whether to recover NTFS permissions for files along with the files.

The preset is: **Enabled**.

If the file NTFS permissions were preserved during backup (p. 41), you can choose whether to recover the permissions or let the files inherit their NTFS permissions from the folder to which they are recovered.

2.9.8.6 Flashback

This option is effective when recovery to a virtual machine is performed by Agent for VMware, Agent for Hyper-V, or Agent for Virtuozzo.

The Flashback technology accelerates recovery of virtual machines. If the option is enabled, only the differences between backup and the target are recovered. Data is compared at the block level.

The preset is: **Enabled**.

2.9.8.7 Full path recovery

This option is effective only when recovering data from a file-level backup.

If this option is enabled, the full path to the file will be re-created in the target location.

The preset is: **Disabled**.

2.9.8.8 Mount points

This option is effective only in Windows for recovering data from a file-level backup.

Enable this option to recover files and folders that were stored on the mounted volumes and were backed up with the enabled Mount points (p. 42) option.

The preset is: **Disabled**.

This option is effective only when you select for recovery a folder that is higher in the folder hierarchy than the mount point. If you select for recovery folders within the mount point or the mount point itself, the selected items will be recovered regardless of the **Mount points** option value.

Note Please be aware that if the volume is not mounted at the moment of recovery, the data will be recovered directly to the folder that has been the mount point at the time of backing up.

2.9.8.9 Performance

This option defines the priority of the recovery process in the operating system.

The available settings are: **Low, Normal, High**.

The preset is: **Normal**.

The priority of a process running in a system determines the amount of CPU and system resources allocated to that process. Decreasing the recovery priority will free more resources for other applications. Increasing the recovery priority might speed up the recovery process by requesting the operating system to allocate more resources to the application that will perform the recovery. However, the resulting effect will depend on the overall CPU usage and other factors like disk I/O speed or network traffic.

2.9.8.10 Pre/Post commands

The option enables you to define the commands to be automatically executed before and after the data recovery.

Example of how you can use the pre/post commands:

- Launch the **Checkdisk** command in order to find and fix logical file system errors, physical errors or bad sectors to be started before the recovery starts or after the recovery ends.

The program does not support interactive commands, i.e. commands that require user input (for example, "pause".)

A post-recovery command will not be executed if the recovery proceeds with reboot.

Pre-recovery command

To specify a command/batch file to be executed before the recovery process starts

1. Enable the **Execute a command before the recovery** switch.
2. In the **Command...** field, type a command or browse to a batch file. The program does not support interactive commands, i.e. commands that require user input (for example, "pause".)
3. In the **Working directory** field, specify a path to a directory where the command/batch file will be executed.
4. In the **Arguments** field specify the command's execution arguments, if required.
5. Depending on the result you want to obtain, select the appropriate options as described in the table below.
6. Click **Done**.

Check box	Selection			
Fail the recovery if the command execution fails*	Selected	Cleared	Selected	Cleared
Do not recover until the command execution is complete	Selected	Selected	Cleared	Cleared
Result				
	Preset Perform the recovery only after the command is successfully executed. Fail the recovery if the command execution failed.	Perform the recovery after the command is executed despite execution failure or success.	N/A	Perform the recovery concurrently with the command execution and irrespective of the command execution result.

* A command is considered failed if its exit code is not equal to zero.

Post-recovery command

To specify a command/executable file to be executed after the recovery is completed

1. Enable the **Execute a command after the recovery** switch.
2. In the **Command...** field, type a command or browse to a batch file.

3. In the **Working directory** field, specify a path to a directory where the command/batch file will be executed.
4. In the **Arguments** field, specify the command execution arguments, if required.
5. Select the **Fail the recovery if the command execution fails** check box if successful execution of the command is critical for you. The command is considered failed if its exit code is not equal to zero. If the command execution fails, the recovery status will be set to **Error**.
When the check box is not selected, the command execution result does not affect the recovery failure or success. You can track the command execution result by exploring the **Activities** tab.
6. Click **Done**.

Note A post-recovery command will not be executed if the recovery proceeds with reboot.

2.9.8.11 Restart during recovery

The option defines whether to reboot the machine automatically if it is required for recovery. This might be the case when a file or volume locked by the operating system has to be recovered.

This option is overridden by the **Automatically restart the machine, if required** check box, which appears when you start the recovery.

The preset is: **Enabled**.

2.9.8.12 SID changing

This option is effective when recovering a Windows operating system.

This option is not effective when recovery to a virtual machine is performed by Agent for VMware or Agent for Hyper-V.

The preset is: **Disabled**.

The software can generate a unique security identifier (SID) for the recovered operating system. You do not need a new SID when recovering a system over itself or when creating a system replica that will replace the original system. Generate a new SID if the original and the recovered systems will work concurrently in the same workgroup or domain.

2.9.8.13 VM power management

These options are effective when recovery to a virtual machine is performed by Agent for VMware, Agent for Hyper-V, or Agent for Virtuozzo.

Power off target virtual machines when starting recovery

The preset is: **Enabled**.

Recovery to an existing virtual machine is not possible if the machine is online, and so the machine is powered off automatically as soon as the recovery starts. Users will be disconnected from the machine and any unsaved data will be lost.

Clear the check box for this option if you prefer to power off virtual machines manually before the recovery.

Power on the target virtual machine when recovery is complete

The preset is: **Disabled**.

After a machine is recovered from a backup to another machine, there is a chance the existing machine's replica will appear on the network. To be on the safe side, power on the recovered virtual machine manually, after you take the necessary precautions.

2.9.8.14 Windows event log

This option is effective only in Windows operating systems.

This option defines whether the agents have to log events of the backup operations in the Application Event Log of Windows (to see this log, run eventvwr.exe or select **Control Panel > Administrative tools > Event Viewer**). You can filter the events to be logged.

The preset is: **Disabled**.

2.10 Operations with backups

2.10.1 The Backups tab

The **Backups** tab shows backups of all machines ever registered under a certain account. This includes offline machines and machines that are no longer registered in the backup service.

A backup service administrator can view backups on behalf of any account that belongs to the given unit or EUC. This account is indirectly chosen in **Machine to browse from**. The **Backups** tab shows backups of all machines ever registered under the same account as this machine is registered.

To view the backups stored in a local or a network folder, first add this folder to the list of backup locations. Click **Browse** and specify the folder path.

To select a recovery point by using the Backups tab

1. On the **Backups** tab, select the location where the backups are stored.
The software displays all backups that your account is allowed to view in the selected location. The backups are combined in groups. The group names are based on the following template:
<machine name> - <backup plan name>
2. Select a group from which you want to recover the data.
3. [Optional] Click **Change** next to **Machine to browse from**, and then select another machine. Some backups can only be browsed by specific agents. For example, you must select a machine running Agent for SQL to browse the backups of Microsoft SQL Server databases.

Important Please be aware that the **Machine to browse from** is a default destination for recovery from a physical machine backup. After you select a recovery point and click **Recover**, double check the **Target machine** setting to ensure that you want to recover to this specific machine. To change the recovery destination, specify another machine in **Machine to browse from**.

4. Click **Show backups**.
5. Select the recovery point.

2.10.2 Deleting backups

To delete backups of a machine that is online and present in the backup service

1. On the **All machines** tab, select a machine whose backups you want to delete.
2. Click **Recovery**.

3. Select the location to delete the backups from.
4. Do one of the following:
 - To delete a single backup, select the backup to delete, and then click the recycle bin icon.
 - To delete all backups in the selected location, click **Delete all**.
5. Confirm your decision.

To delete backups of any machine

1. On the **Backups** tab, select the location from which you want to delete the backups.
The software displays all backups that your account is allowed to view in the selected location. The backups are combined in groups. The group names are based on the following template:
<machine name> - <backup plan name>
2. Select a group.
3. Do one of the following:
 - To delete a single backup, click **Show backups**, select the backup to delete, and then click the recycle bin icon.
 - To delete the selected group, click **Delete**.
4. Confirm your decision.

2.11 Operations with backup plans

To edit a backup plan

1. If you want to edit the backup plan for all machines to which it is applied, select one of these machines. Otherwise, select the machines for which you want to edit the backup plan.
2. Click **Backup**.
3. Select the backup plan that you want to edit.
4. Click the gear icon next to the backup plan name, and then click **Edit**.
5. To modify the plan parameters, click the corresponding section of the backup plan panel.
6. Click **Save changes**.
7. To change the backup plan for all machines to which it is applied, click **Apply the changes to this backup plan**. Otherwise, click **Create a new backup plan only for the selected resources**.

To revoke a backup plan from machines

1. Select the machines that you want to revoke the backup plan from.
2. Click **Backup**.
3. If several backup plans are applied to the machines, select the backup plan that you want to revoke.
4. Click the gear icon next to the backup plan name, and then click **Revoke**.

To delete a backup plan

1. Select any machine to which the backup plan that you want to delete is applied.
2. Click **Backup**.
3. If several backup plans are applied to the machine, select the backup plan that you want to delete.
4. Click the gear icon next to the backup plan name, and then click **Delete**.
As a result, the backup plan is revoked from all of the machines and completely removed from the web interface.

2.12 Advanced operations with virtual machines

2.12.1 Running a virtual machine from a backup

You can run a virtual machine from a disk-level backup that contains an operating system. This operation, also known as instant recovery, enables you to spin up a virtual server in seconds. The virtual disks are emulated directly from the backup and thus do not consume space on the datastore (storage). The storage space is required only to keep changes to the virtual disks.

We recommend running this temporary virtual machine for up to three days. Then, you can completely remove it or convert it to a regular virtual machine (finalize) without downtime.

As long as the temporary virtual machine exists, retention rules cannot be applied to the backup being used by that machine. Backups of the original machine can continue to run.

Usage examples

- **Disaster recovery**
Instantly bring a copy of a failed machine online.
- **Testing a backup**
Run the machine from the backup and ensure that the guest OS and applications are functioning properly.
- **Accessing application data**
While the machine is running, use application's native management tools to access and extract the required data.

Prerequisites

- At least one Agent for VMware or Agent for Hyper-V must be registered in the backup service.
- The backup must be stored in a network folder or in a local folder of the machine where Agent for VMware or Agent for Hyper-V is installed. If you select a network folder, it must be accessible from that machine.

Important A virtual machine cannot be run from a backup stored in the cloud storage. This is because this operation requires intense random-access reading from the backup.

- The backup must contain an entire machine or all of the volumes that are required for the operating system to start.
- Backups of both physical and virtual machines can be used. Backups of Virtuozzo *containers* cannot be used.

2.12.1.1 Running the machine

1. Do one of the following:
 - Select a backed-up machine, click **Recovery**, and then select a recovery point.
 - Select a recovery point on the Backups tab (p. 68).
2. Click **Run as VM**.

The software automatically selects the host and other required parameters.

✕

Run 'Windows 8 x64' as VM

TARGET MACHINE

Windows 8 x64_temp on 10.250.154.182

DATASTORE

datastore3

VM SETTINGS

Memory: 2.00 GB

Network adapters: 1

POWER STATE

On ▼

RUN NOW

3. [Optional] Click **Target machine**, and then change the virtual machine type (ESXi or Hyper-V), the host, or the virtual machine name.
4. [Optional] Click **Datastore** for ESXi or **Path** for Hyper-V, and then select the datastore for the virtual machine.
Changes to the virtual disks accumulate while the machine is running. Ensure that the selected datastore has enough free space.
5. [Optional] Click **VM settings** to change the memory size and network connections of the virtual machine.
6. [Optional] Select the VM power state (**On/Off**).
7. Click **Run now**.

As a result, the machine appears in the web interface with one of the following icons:



. Such virtual machines cannot be selected for backup.



or

2.12.1.2 Deleting the machine

We do not recommend to delete a temporary virtual machine directly in vSphere/Hyper-V. This may lead to artifacts in the web interface. Also, the backup from which the machine was running may remain locked for a while (it cannot be deleted by retention rules).

To delete a virtual machine that is running from a backup

1. On the **All machines** tab, select a machine that is running from a backup.
2. Click **Delete**.

The machine is removed from the web interface. It is also removed from the vSphere or Hyper-V inventory and datastore (storage). All changes that occurred to the data while the machine was running are lost.

2.12.1.3 Finalizing the machine

While a virtual machine is running from a backup, the virtual disks' content is taken directly from that backup. Therefore, the machine will become inaccessible or even corrupted if the connection is lost to the backup location or to the backup agent.

For an ESXi machine, you have the option to make this machine permanent, i.e. recover all of its virtual disks, along with the changes that occurred while the machine was running, to the datastore that stores these changes. This process is named finalization.

Finalization is performed without downtime. The virtual machine will *not* be powered off during finalization.

To finalize a machine that is running from a backup

1. On the **All machines** tab, select a machine that is running from a backup.
2. Click **Finalize**.
3. [Optional] Specify a new name for the machine.
4. [Optional] Change the disk provisioning mode. The default setting is **Thin**.
5. Click **Finalize**.

The machine name changes immediately. The recovery progress is shown on the **Activities** tab. Once the recovery is completed, the machine icon changes to that of a regular virtual machine.

2.12.2 Application-aware backup

When you back up an ESXi virtual machine running Microsoft SQL Server, Microsoft Exchange Server, or Active Directory Domain Services, enable **Application backup** for additional protection of these applications' data.

Why use application-aware backup?

By using application-aware backup, you ensure that:

1. The applications are backed up in a consistent state and thus will be available immediately after the machine is recovered.
2. You can recover the SQL and Exchange databases without recovering the entire machine. Thus, you do not need to install Agent for SQL or Agent for Exchange in the guest system and create an additional backup plan to protect the applications.
3. The SQL and Exchange transaction logs are truncated after each successful backup. SQL log truncation can be disabled in the backup plan options.
4. If a domain contains more than one domain controller, and you recover one of them, a nonauthoritative restore is performed and a USN rollback will not occur after the recovery.

2.12.2.1 Prerequisites

Before enabling the application backup, ensure that:

- The virtual machines being backed up meet the requirements for application-consistent quiescing listed in the following VMware knowledge base article:
<https://pubs.vmware.com/vsphere-60/index.jsp?topic=%2Fcom.vmware.vddk.pg.doc%2FvddkBkupVadp.9.6.html>
- VMware Tools is installed and up-to-date on each of the virtual machines that you want to back up.
- User Account Control (UAC) is disabled on the machines. If you do not want to disable UAC, you must provide the credentials of a built-in domain administrator (DOMAIN\Administrator) when enabling application backup.
- **Entire machine** is selected for backup.
- The **Volume Shadow Copy Service (VSS) for virtual machines** backup option is enabled in the backup plan. To find this option, click the gear icon, then **Backup options > Volume Shadow Copy Service (VSS) for virtual machines**. This option is enabled by default.

For Microsoft SQL Server, also ensure that:

- SQL Server Browser Service and TCP/IP protocol are enabled on the machines. For instructions on how to start SQL Server Browser Service, refer to:
<http://msdn.microsoft.com/en-us/library/ms189093.aspx>. You can enable the TCP/IP protocol by using a similar procedure.

2.12.2.2 Required user rights

An application-aware backup contains metadata of VSS-aware applications that are present on the disk. To access this metadata within the guest system, Agent for VMware needs an account with the appropriate rights that are listed below. You are prompted to specify this account when enabling application backup.

- For SQL Server:
The account must be a member of the **Backup Operators** or **Administrators** group on the machine, and a member of the **sysadmin** role on each of the instances that you are going to back up.
- For Exchange Server:
See "Selecting Exchange Server data" (p. 30).
- For Active Directory
The account must be a domain administrator.

2.12.2.3 Recovering databases from application-aware backups

You can recover SQL and Exchange databases from application-aware backups of virtual machines. For information about creating application-aware backups, see "Application-aware backup" (p. 72).

The databases, along with their logs and other related files, will be saved as files to a folder you specify. After that, you can attach the databases to a live SQL Server or Exchange Server. You can also use the database files for data mining, audit, or further processing by third-party tools.

To recover databases

1. Select the machine which originally contained the data that you want to recover.
2. Click **Recovery**.

3. Select a recovery point. Note that recovery points are filtered by location.
4. Click **Recover**, and then click one of the following:
 - **SQL databases**
 - **Exchange databases**
5. Select the databases that you want to recover.
6. Click **Recover as files**.
7. Select the recovery destination. You can specify a network folder or a local folder of the machine where Agent for VMware is installed. If you select a network folder, it must be accessible from that machine.
8. Click **Start recovery**.
9. Select one of the file overwriting options:
 - **Overwrite existing files**
 - **Overwrite an existing file if it is older**
 - **Do not overwrite existing files**
10. You can now attach the recovered databases as described in one of the following sections:
 - Attaching SQL Server databases (p. 60)
 - Mounting Exchange Server databases (p. 62)

2.12.3 Managing virtualization environments

You can view the vSphere, Hyper-V, and Virtuozzo environments in their native presentation. Once the corresponding agent is installed and registered, the **VMware**, **Hyper-V**, or **Virtuozzo** tab appears under **Resources**.

The **VMware** tab enables you to change access credentials for the vCenter Server or standalone ESXi host without re-installing the agent.

To change the vCenter Server or ESXi host access credentials

1. Under **Resources**, click **VMware**.
2. Click **Hosts and Clusters**.
3. In the **Hosts and Clusters** list (to the right of the **Hosts and Clusters** tree), select the vCenter Server or standalone ESXi host that was specified during the Agent for VMware installation.
4. Click **Overview**.
5. Under **Credentials**, click the user name.
6. Specify the new access credentials, and then click **OK**.

2.12.4 Machine migration

You can perform machine migration by recovering its backup to a non-original machine.

The following table summarizes the available migration options.

Backed-up machine type	Available recovery destinations				
	Physical machine	ESXi virtual machine	Hyper-V virtual machine	Virtuozzo virtual machine	Virtuozzo container
Physical machine	+	+	+	-	-

VMware ESXi virtual machine	+	+	+	-	-
Hyper-V virtual machine	+	+	+	-	-
Virtuozzo virtual machine	+	+	+	+	-
Virtuozzo container	-	-	-	-	+

For instructions on how to perform migration, refer to the following sections:

- Physical-to-virtual (P2V) - "Physical machine to virtual" (p. 52)
- Virtual-to-virtual (V2V) - "Virtual machine" (p. 54)
- Virtual-to-physical (V2P) - "Virtual machine" (p. 54) or "Recovering disks by using bootable media" (p. 55)

Although it is possible to perform V2P migration in the web interface, we recommend using bootable media in specific cases. Sometimes, you may want to use the media for migration to ESXi or Hyper-V.

The media enables you to do the following:

- Choose individual disks or volumes for recovery.
- Manually map the disks from the backup to the target machine disks.
- Recreate logical volumes (LVM) or Linux Software RAID on the target machine.
- Provide drivers for specific hardware that is critical for the system bootability.

2.13 Troubleshooting

This section describes how to save an agent log to a .zip file. If a backup fails for an unclear reason, this file will help the technical support personnel to identify the problem.

To collect logs

1. Select the machine that you want to collect the logs from.
2. Click **Activities**.
3. Click **Collect system information**.
4. If prompted by your web browser, specify where to save the file.

3 Glossary

B

Backup set

A group of backups to which an individual retention rule can be applied.

For the **Custom** backup scheme, the backup sets correspond to the backup methods (**Full**, **Differential**, and **Incremental**).

In all other cases, the backup sets are **Monthly**, **Daily**, **Weekly**, and **Hourly**.

- A monthly backup is the first backup created after a month starts.
- A weekly backup is the first backup created on the day of the week selected in the **Weekly backup** option (click the gear icon, then **Backup options** > **Weekly backup**).
- A daily backup is the first backup created after a day starts.
- An hourly backup is the first backup created after an hour starts.

D

Differential backup

A differential backup stores changes to the data against the latest full backup (p. 76). You need access to the corresponding full backup to recover the data from a differential backup.

F

Full backup

A self-sufficient backup containing all data chosen for backup. You do not need access to any other backup to recover the data from a full backup.

I

Incremental backup

A backup that stores changes to the data against the latest backup. You need access to other backups to recover data from an incremental backup.

S

Single-file backup format

A new backup format, in which the initial full and subsequent incremental backups are saved to a single .tib file, instead of a chain of files. This format leverages the speed of the incremental backup method, while avoiding its main disadvantage—difficult deletion of outdated backups. The software marks the blocks used by outdated backups as "free" and writes new backups to these blocks. This results in extremely fast cleanup, with minimal resource consumption.

Copyright Statement

Copyright © Acronis International GmbH, 2002-2016. All rights reserved.

“Acronis” and “Acronis Secure Zone” are registered trademarks of Acronis International GmbH.

“Acronis Compute with Confidence”, “Acronis Startup Recovery Manager”, “Acronis Active Restore”, “Acronis Instant Restore” and the Acronis logo are trademarks of Acronis International GmbH.

Linux is a registered trademark of Linus Torvalds.

VMware and VMware Ready are trademarks and/or registered trademarks of VMware, Inc. in the United States and/or other jurisdictions.

Windows and MS-DOS are registered trademarks of Microsoft Corporation.

All other trademarks and copyrights referred to are the property of their respective owners.

Distribution of substantively modified versions of this document is prohibited without the explicit permission of the copyright holder.

Distribution of this work or derivative work in any standard (paper) book form for commercial purposes is prohibited unless prior permission is obtained from the copyright holder.

DOCUMENTATION IS PROVIDED “AS IS” AND ALL EXPRESS OR IMPLIED CONDITIONS, REPRESENTATIONS AND WARRANTIES, INCLUDING ANY IMPLIED WARRANTY OF MERCHANTABILITY, FITNESS FOR A PARTICULAR PURPOSE OR NON-INFRINGEMENT, ARE DISCLAIMED, EXCEPT TO THE EXTENT THAT SUCH DISCLAIMERS ARE HELD TO BE LEGALLY INVALID.

Third party code may be provided with the Software and/or Service. The license terms for such third-parties are detailed in the license.txt file located in the root installation directory. You can always find the latest up-to-date list of the third party code and the associated license terms used with the Software and/or Service at <http://kb.acronis.com/content/7696>

Acronis patented technologies

Technologies, used in this product, are covered and protected by one or more U.S. Patent Numbers: 7,047,380; 7,275,139; 7,281,104; 7,318,135; 7,353,355; 7,366,859; 7,475,282; 7,603,533; 7,636,824; 7,650,473; 7,721,138; 7,779,221; 7,831,789; 7,886,120; 7,895,403; 7,934,064; 7,937,612; 7,949,635; 7,953,948; 7,979,690; 8,005,797; 8,051,044; 8,069,320; 8,073,815; 8,074,035; 8,145,607; 8,180,984; 8,225,133; 8,261,035; 8,296,264; 8,312,259; 8,347,137; 8,484,427; 8,645,748; 8,732,121 and patent pending applications.